

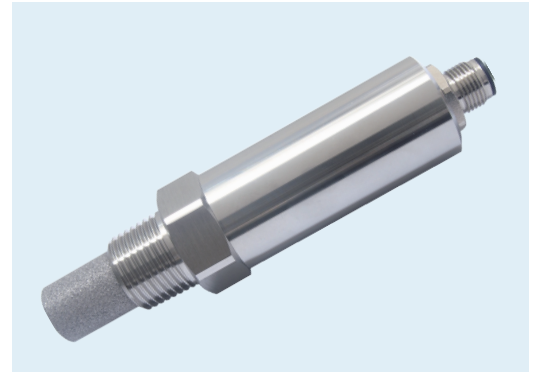


Model BDTH01-01

# Dew Point Transmitter

## Features and Benefits

- ◆ Standard Modbus RTU protocol and 4-20mA analog output
- ◆ Easy installation in process with the sampling cell
- ◆ High quality and long term stability
- ◆ Customized dew point range are available

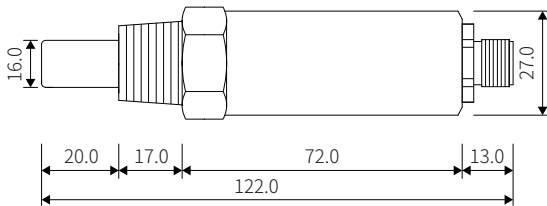


## Technical Specification

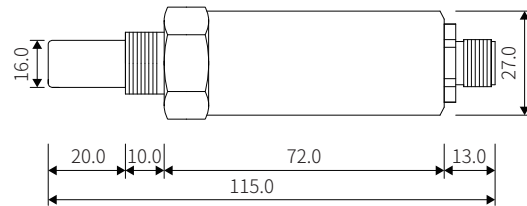
Dew point range	-20 to 60°C Td -40 to 60°C Td -60 to 60°C Td	
Accuracy	±2°C Td@25°C (-40 to 60°C Td) ±3°C Td@25°C (-60 to -40°C Td)	
Temperature compensation	Yes	
Current output	4 ... 20 mA	
Voltage output	0 ... 1 V / 5 V / 10 V	
Load resistance	RL < 400 ohm (4 ... 20 mA output) RL > 2k ohm (0 ... 1 V output) RL > 10k ohm (0 ... 5 V or 0 ... 10 V output)	
Digital output	RS485 Modbus RTU	
Supply voltage	24 VDC	
Housing material	stainless steel 304	
Process pressure	10MPa maximum	
Housing protection	IP65	
Process connection	PT1/2" UNF5/8"	G1/2"
Electrical connections	M12, 5 pin	
Sensor protection	sintered filter	
Operation temperature	-40 to 85°C (-40 to 185°F)	
Electromagnetic compatibility	EN 61326-1:2013 Emission CISPR 11:2009+A1:2010 Group1 Class B EN 61326-1:2013 Immunity IEC 61000-4-2:2008 IEC 61000-4-3:2006+A1:2007+A2:2010 IEC 61000-4-8:2009	

## Dimensions (mm)

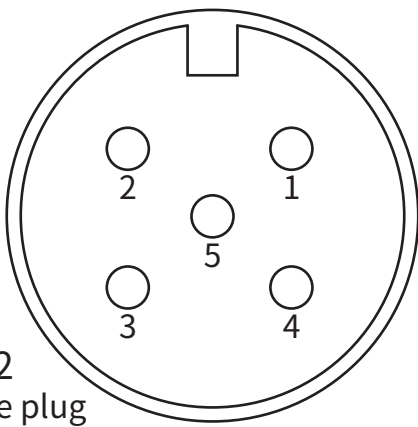
PT 1/2" G 1/2"



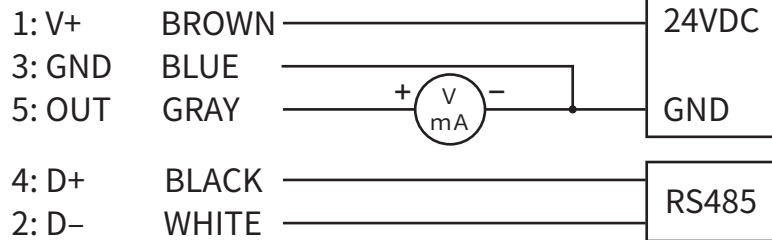
UNF 5/8"



## Wiring Diagram



M12  
Male plug



## Ordering

Typical Model Number: **BDTH01 - 01 - B - 0 - P - N**  
(1)    (2)    (3)    (4)

(1) Dew point range	<u>A</u> : -60 to 60°C <u>B</u> : -40 to 60°C	<u>C</u> : -20 to 60°C <u>X</u> : On request
(2) Analogy output	<u>0</u> : 4 ... 20mA <u>1</u> : 0 ... 10V <u>2</u> : 0 ... 5V <u>3</u> : 0 ... 1V	
(3) Thread	<u>P</u> : PT 1/2" <u>G</u> : G 1/2" <u>U</u> : UNF 5/8"	
(4) Sampling accessories	<u>S</u> : With the sampling cell <u>N</u> : Without	