



VALLA 250 E MOBILE CRANE MAX CAPACITY 25 t



PROPULSION: 28 kW - 96 V DC fanned reversible electric motor fitted with a MOSFET speed control and microprocessor. Foot operated brakes on 6 wheels. Hand brake hydraulically operated.

TRANSMISSION: differential axle with reduction gear between motor and wheels running in oil bath. Travelling speed up to 8 k/h.

STEERING: power steering operated by a telescopic ram fitted between the articulated power unit and the crane frame allowing a 120° steering fitted with safety valves and filters.

BATTERY: 1450 Ah - 96 V battery meter on dashboard.

SUSPENSION: oscillating rear axle.

CRANE FRAME: fabricated from preformed and welded steel plate with built-in counterweight.

WHEELS: rear 2 solid tires 355/65-15". Front 6 solid tires 3.00-15".

BOOM: fabricated from preformed and welded steel plate with 4 hydraulic telescoping sections. Fitted with adjustable nylon wear pads.

HYDRAULIC SYSTEM: in own enclosed circuit powered by a 18 kW - 96 V motor driven pump through two self cancelling control valves, lever operated, 1 for boom raise and lower, 1 for boom extending and retraction. Fitted with safety valves and filters. Maximum hydraulic pressure 220 Bar.

DRIVER'S OVERHEAD GUARD: a steel frame over driver's seat allowing full visibility with metal checker plate overhead.

TOTAL MACHINE WEIGHT: 25.000 kg.

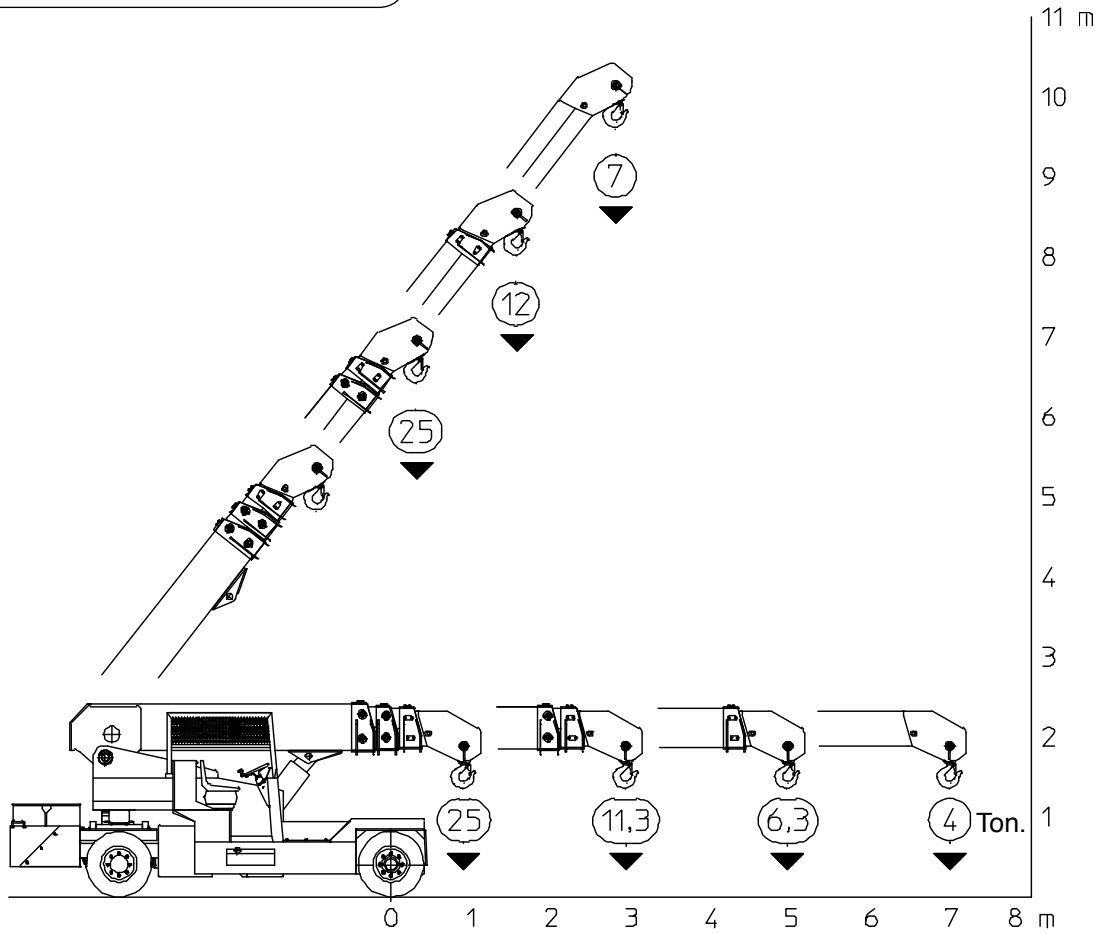
OPTIONAL EXTRAS: L.M.I. (Load Moment Indicator with angle, boom extension indicators and visible warning for max. capacity), man bucket, remote control, metal/glass enclosed cab, hydraulic winch, hydraulic chain hoist, carry deck, battery, battery charger.

Valla S.p.A.

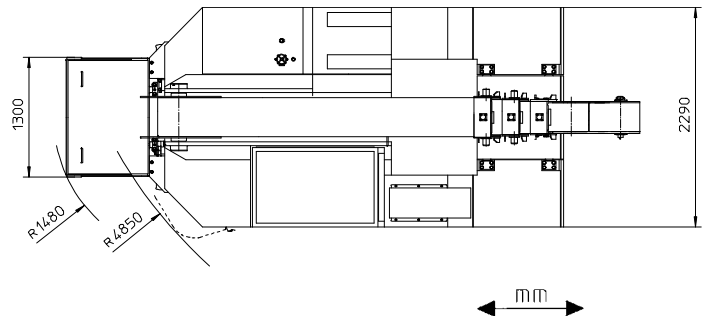
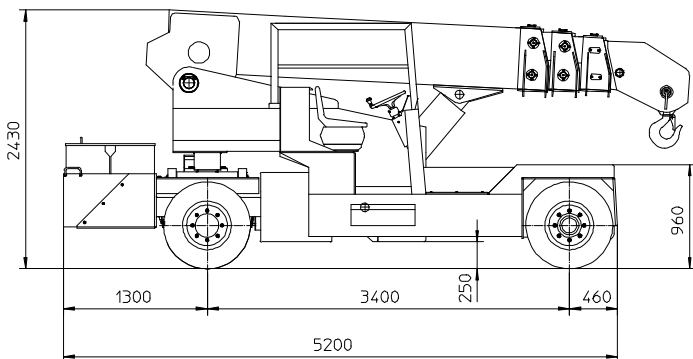
Via Piacenza, 45 - 29010 Calendasco - Piacenza - ITALIA
Tel. 0039 0523 762025 - 762004 - Fax 0039 0523 760531
Internet: www.valla.com - email: info@valla.com

The crane complies with following international standards:

- I.S.P.E.S.L.
- DIN 15018 (1,3) - 15019 (1) class H 2 B3
- ANSI - 1994
- 98/37/CE
- 89/336/CEE



VALLA MODEL 250 E



Valla S.p.A.

Via Piacenza, 45 - 29010 Calendasco - Piacenza - ITALIA
 Tel. 0039 0523 762025 - 762004 - Fax 0039 0523 760531
 Internet: www.valla.com - email: info@valla.com

