



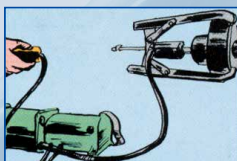
# SUPER LIGHT ELECTRO HYDRAULIC PUMPS

## UP-35RH Series

■PAT.PENDING



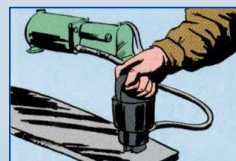
### TYPICAL APPLICATIONS



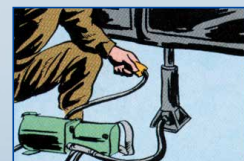
Gear, pulley removal



Wire rope, cable cutting



Punching



Jacking up

The electro-hydraulic pump is a high-performance, ultra-compact, lightweight, and you can use them for any hydraulic tool.

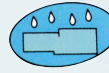
# UP-35RH Series



used in all directions



Lightweight ultra-compact



Encapsulated type

UP-35RH series is the highest pressure is 70MPa, combines the portability of the ease of use of the electric hydraulic pump and a manual hydraulic pump, is very lightweight compact electric hydraulic pump. Oil tank is, in its own sealed type, can be used in all directions. In addition, since it is a combination of a variety of hydraulic tool, you can take advantage of a wide range.

## Use

- Combination work of Pooler ●Wire cutter ●Puncher ●Jack-up ●Pipe bender ●Lifter

## Utilization range

- Electric facility ●Construction ●Factory ●Shipbuilding ●vehicle ●Transportation ●test etc.

## TECHNICAL SPECIFICATIONS

Model	Electric Motor (50/60Hz)				Hydraulic Pump				Fuel tank		Weight (kg)	Control Switch
	Type	Voltage (V) AC	Output KW (HP)	Rotational speed rpm	Max.pressure Mpa		Output(ℓ /min)		Cap. ℓ	Usable ℓ		
UP-35RH	E species Commutator	220/230* (Single-phase)	0.35 (1/3)	2000	H.pressure	L.pressure	H.pressure	L.pressure	1.0	0.8	7.2	Remote ON/OFF
UP-35RH-L					70	1	0.2	2.0				

\*For 100V and 200V, please contact us.

WITH SOLENOID VALVE-CAN BE STOPPED ON FORWARD ACTION

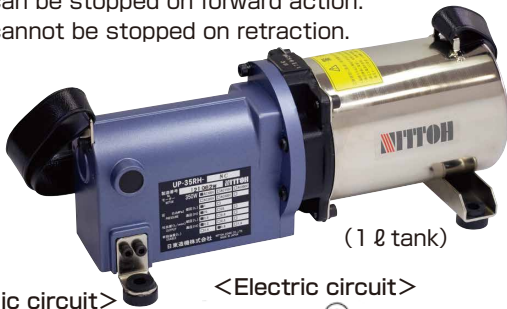
## UP-35RH-NC

(2ℓ tank Model number) **UP-35RH-NCL**

For single acting applications.

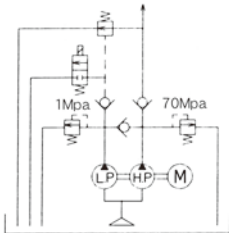
Cylinder can be stopped on forward action.

Cylinder cannot be stopped on retraction.

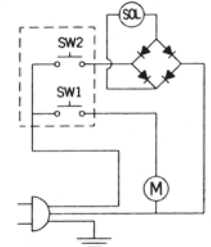


(1 ℓ tank)

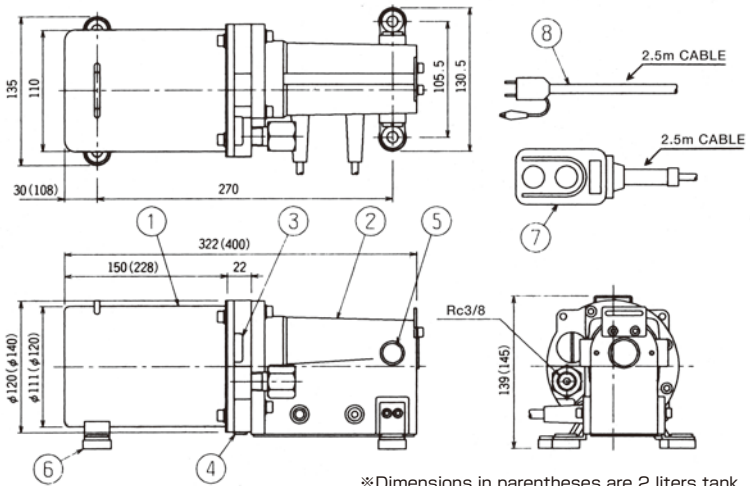
<Hydraulic circuit>



<Electric circuit>



<Dimensions>(mm) ●weight (Including oil) 7.5kg (2ℓ tank 8.7kg)



\*Dimensions in parentheses are 2 liters tank.

① Oil tank	④ Relief valve	⑦ Operating switch
② Motor	⑤ Carbon brush	⑧ El. cable
③ Filling cap	⑥ Rubber foot×4	

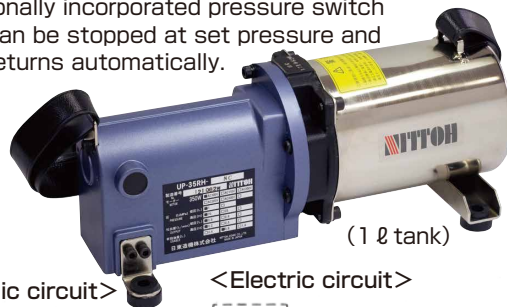
WITH SOLENOID VALVE-AUTOMATIC RETURN TYPE

## UP-35RH-NO

(2ℓ tank Model number) **UP-35RH-NOL**

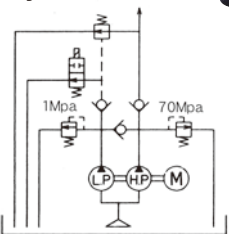
While ON switch is pressed pump is running.

With optionally incorporated pressure switch cylinder can be stopped at set pressure and cylinder returns automatically.

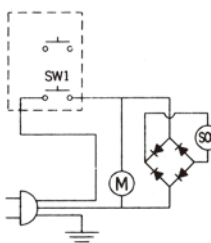


(1 ℓ tank)

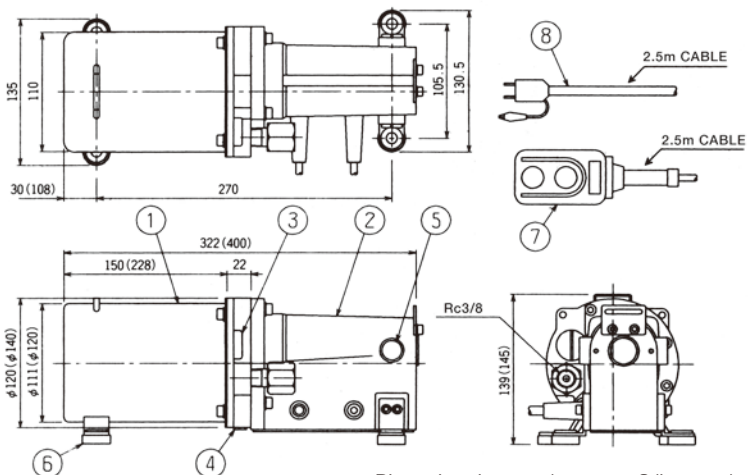
<Hydraulic circuit>



<Electric circuit>



<Dimensions>(mm) ●weight (Including oil) 7.5kg (2ℓ tank 8.7kg)



\*Dimensions in parentheses are 2 liters tank.

① Oil tank	④ Relief valve	⑦ Operating switch
② Motor	⑤ Carbon brush	⑧ El. cable
③ Filling cap	⑥ Rubber foot×4	

WITH DIFFERENTIAL PRESSURE VALVE-AUTOMATIC RETURN TYPE

# UP-35RH-AR

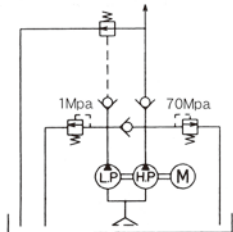
(2 l tank Model number) **UP-35RH-ARL**

When ON switch is pressed pump is running. Release switch, pump stops and cylinder returns automatically.

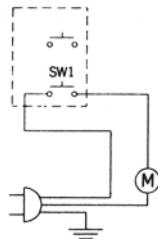


(1 l tank)

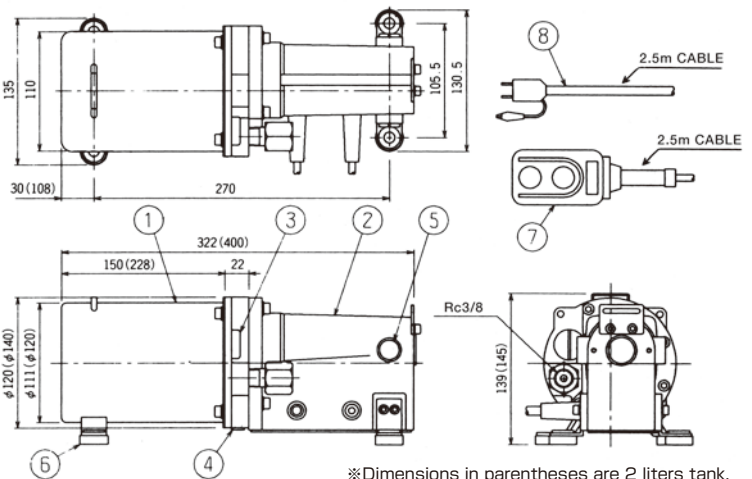
<Hydraulic circuit>



<Electric circuit>



<Dimensions>(mm) ●weight (Including oil) 7.2kg (2 l tank 8.4kg)



※Dimensions in parentheses are 2 liters tank.

① Oil tank	④ Relief valve	⑦ Operating switch
② Motor	⑤ Carbon brush	⑧ El. cable
③ Filling cap	⑥ Rubber foot×4	

WITH SOLENOID VALVE-PRESSURE HOLD TYPE

# UP-35RH-IN

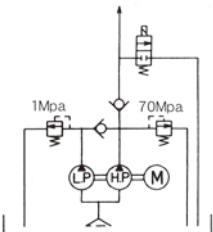
(2 l tank Model number) **UP-35RH-INL**

Cylinder can be stopped both on forward action and retraction.

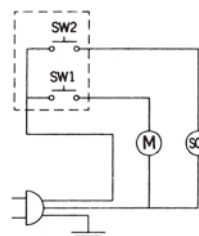


(1 l tank)

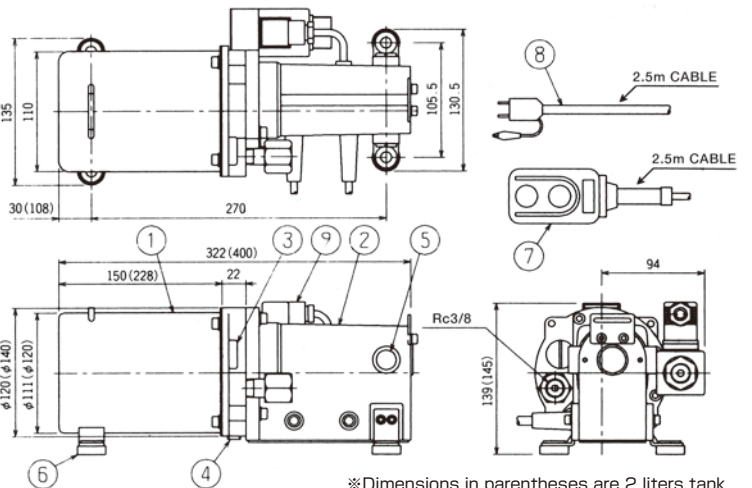
<Hydraulic circuit>



<Electric circuit>



<Dimensions>(mm) ●weight (Including oil) 7.8kg (2 l tank 9.0kg)



※Dimensions in parentheses are 2 liters tank.

① Oil tank	④ Relief valve	⑦ Operating switch
② Motor	⑤ Carbon brush	⑧ El. cable
③ Filling cap	⑥ Rubber foot×4	⑨ Solenoid

WITH IN-LINE CHECK VALVE-MANUAL TWO-WAY VALVE

# UP-35RH-2M

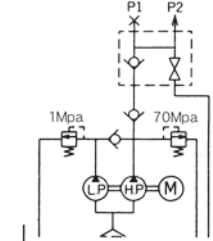
(2 l tank Model number) **UP-35RH-2ML**

For single acting applications. Press ON switch pump is running. Open manual valve cylinder returns. Pressure gauge can be incorporated at port.

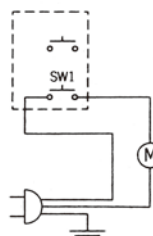


(2 l tank)

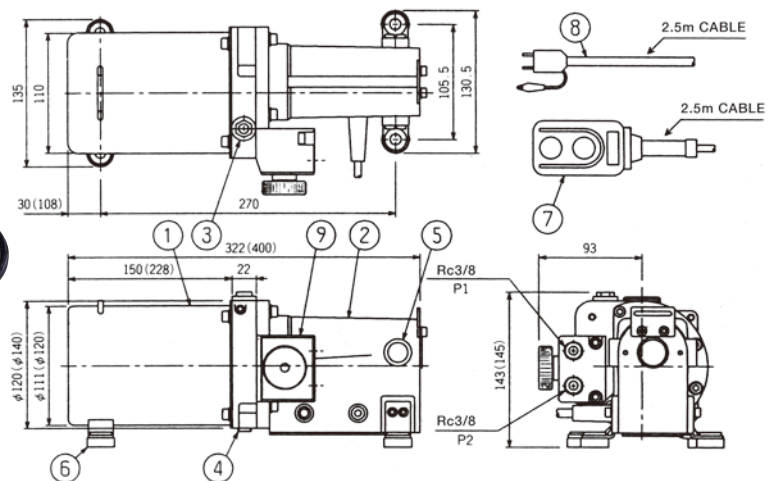
<Hydraulic circuit>



<Electric circuit>



<Dimensions>(mm) ●weight (Including oil) 8.5kg (2 l tank 9.7kg)



※Dimensions in parentheses are 2 liters tank.

① Oil tank	④ Relief valve	⑦ Operating switch
② Motor	⑤ Carbon brush	⑧ El. cable
③ Filling cap	⑥ Rubber foot×4	⑨ Switching valve

WITH THREE POSITION-FOUR WAY MANUAL VALVE

# UP-35RH-4M

(2 ℓ tank Model number) **UP-35RH-4ML**

For double acting cylinders. When ON switch is pressed pump is running. ON switch released pump stops. Four different manual valves are available for different applications.

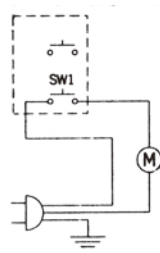
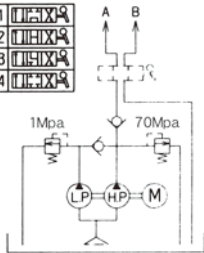


(2 ℓ tank)

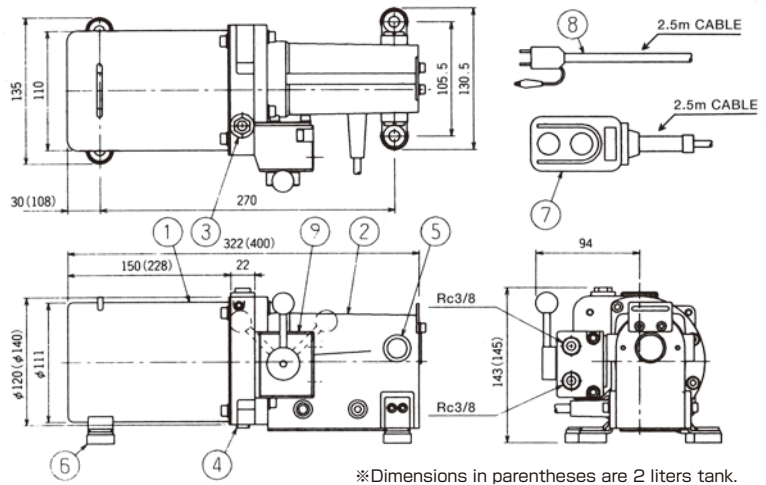
<Hydraulic circuit>

<Electric circuit>

4M-1	
4M-2	
4M-3	
4M-4	



<Dimensions>(mm) ●weight (Including oil) 8.5kg (2 ℓ tank 9.7kg)



※Dimensions in parentheses are 2 liters tank.

① Oil tank	④ Relief valve	⑦ Operating switch
② Motor	⑤ Carbon brush	⑧ El. cable
③ Filling cap	⑥ Rubber foot × 4	⑨ Switching valve

Series in pursuit of ease and manipulation ease of portability

# UP-35RH-1M series

## UP-35RH-1M

## UP-35RH-1MB



### TECHNICAL SPECIFICATIONS

Model	Electric Motor (50/60Hz)				Hydraulic Pump				Fuel tank		Weight (kg)	Control Switch
	Type	Voltage (V) AC	Output KW (HP)	Rotational speed rpm	Max.pressure Mpa		Output (ℓ/min)		Cap. ℓ	Usable ℓ		
					H.pressure	L.pressure	H.pressure	L.pressure				
UP-35RH-1M(B)	E species Commutator	220 / 230 ※ (Single-phase)	0.35 (1/3)	2000	70	—	0.3	0.6	1.0	0.8	7.0	Remote ON
UP-35RH-1M(B)-L									2.0	1.6		

※For 100V and 200V, please contact us.

**NITTOH NITTOH ZOHKI CO.,LTD.**

2-4-10 Kamezawa, Sumida-ku, Tokyo 130-0014 Japan

Tel. +81-3-3625-6551 Fax.+81-3-3625-6553

Factory :

585 Takashi, Mobara-shi, Chiba-Ken 297-0029 Japan

Web <http://www.nittoh.co.jp>