

P/N: w/5.5 kw x 6P motor

155845 380V50Hz **153277** 380V50Hz

158752 415V50Hz **155185** 208V60Hz

158753 415V50Hz

Introduction

► Feature

- Lifting capacity: 3,500 kg at 50Hz ; 2,800 kg at 60 Hz wire rope top layer
- Lifting height: 144 m
- Lifting speed: 6P: 5.8-8 m/min at 50Hz ; 6.9-9.6 m/min at 60Hz
- Brake: Electromagnetic spring-applied failsafe brake
- Control: Pendant switch powers the winch

► Unpacking

- Winch assembly 1pc
- Wire rope 16 mm x 200 m w/safety hook for PN:153277 1pc
- Wire rope 18 mm x 150 m w/safety hook for PN:155845,158752 1pc
- Low voltage control ass'y LV-320 1pc
- Low voltage control ass'y LV-360 for PN:155185 1pc
- Pendant switch PB-306 w/cord 1.25 mm² x 3C x 3 m 1pc

► Read this manual carefully

You should carefully read and understand this manual carefully before operating it. Careless winch operation may result in personal injury hazards or property damage.

► Information requesting or parts ordering

Please specify the followings information:

- Winch part number
- Part description
- Quantity for each part
- Serial number
- Replacement part number

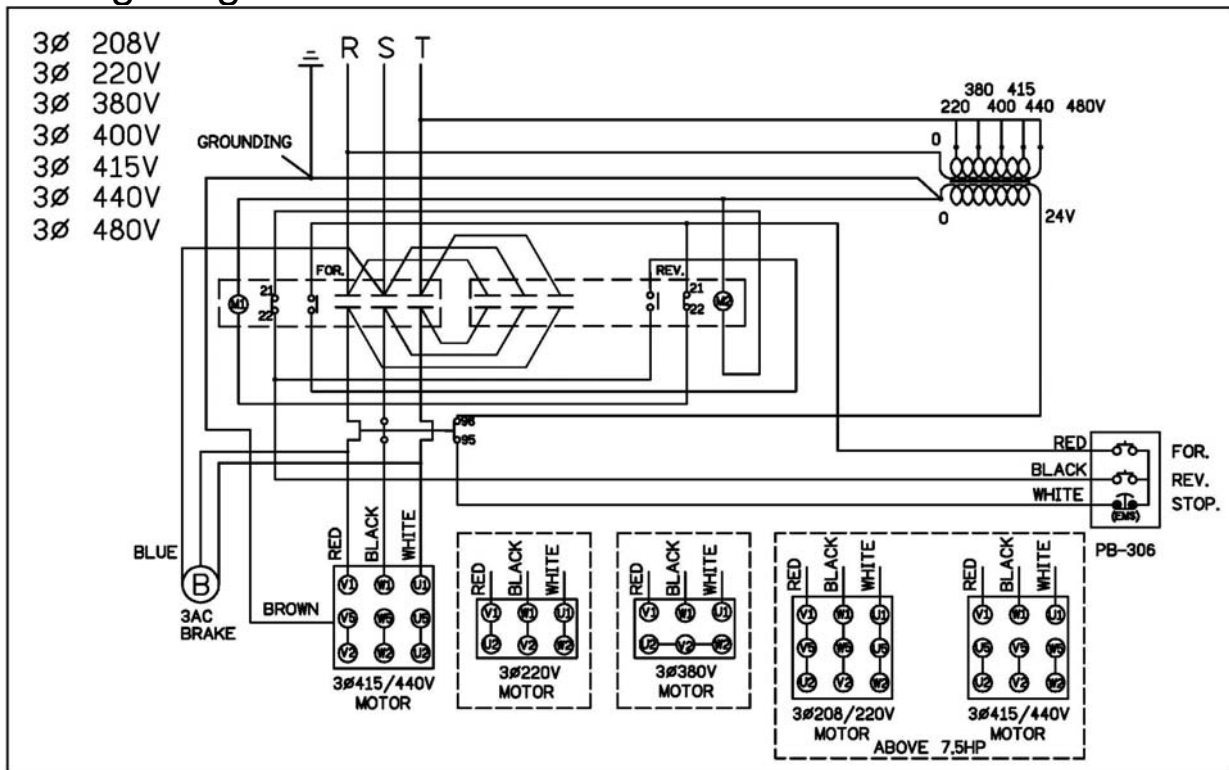
Installation

Before using the winch, make sure all electrical components have no corrosion or damaged; the environment should be clear and dry.

► Performance

Winch Model			CWG-31500									
Motor	kw x p	5.5 x 6					3.8 x 8					
Recommend Wire Rope	Size(mm)	18										
Breaking (kg)	15,000											
1 st Layer	Rated Load (kg)	50Hz		4,848	Rated Load (kg)	50Hz		4,422	Rated Load (kg)	50Hz		4,065
		60Hz		3,878		60Hz		3,538		60Hz		3,252
	Speed (m/min)	50Hz	6P	5.8	Speed (m/min)	50Hz	6P	6.4	Speed (M/min)	50Hz	6P	6.9
			8P	4.4			8P	4.8			8P	5.2
		60Hz	6P	6.9		60Hz	6P	7.6		60Hz	6P	8.2
			8P	5.2			8P	5.7			8P	6.2
Rope-Winding Cumulating Sum (m)			25	Rope-Winding Cumulating Sum (m)			53	Rope-Winding Cumulating Sum (m)			83	
4 th Layer	Rated Load (kg)	50Hz		3,761	Rated Load (kg)	50Hz		3,500	Rated Load (kg)	50Hz		3,252
		60Hz		3,009		60Hz		2,800		60Hz		2,550
	Speed (m/min)	50Hz	6P	7.5	Speed (m/min)	50Hz	6P	8	Speed (m/min)	50Hz	6P	8.2
			8P	5.6			8P	6			8P	6.2
		60Hz	6P	9		60Hz	6P	9.6		60Hz	6P	10.2
			8P	6.7			8P	7.2			8P	7.2
Rope-Winding Cumulating Sum (m)			116	Rope-Winding Cumulating Sum (m)			150	Rope-Winding Cumulating Sum (m)			184	

► Wiring Diagram



Warning

- The winch is not intended to be used in any manner for the movement or lifting of personnel.
- The lifting capacity shown is based on the top layer of rope on the drum.
- The rope winding on the drum shall remain 5 wraps from the drum.

Parts List

Item No.	Description	Part No.	Qty
1	Motor kit	As arranged	1
2	Motor support rack kit	880651	1
3	Drum kit	880652	1
4	Connect shaft kit	880653	1
5	Tie bar kit	880654	4
6	Gearbox support rack kit	880655	1
7	3 rd stage carrier kit	881631	1
8	2 nd stage carrier kit	881632	1
9	3 rd ring gear kit	880660	1
10	Fix plate kit	880661	1
11	1 st stage carrier kit	881625	1
12	1 st & 2 nd ring gear kit	880664	1
13	1 st shaft kit	880665	1
14	Brake base kit	881443	1
15	Brake kit	As arranged	1
15-1	Brake disc	880626	2
15-2	Brake coil	As arranged	1
16	Brake rear cover kit	880627	1
17	Wire rope w/hook 16 mm x 200 m	881362	1
	Wire rope w/hook 18 mm x 150 m	880669	
18	Low voltage control ass'y LV-320	As arranged	1
	Low voltage control ass'y LV-360	882169	
18-1	Remote control, PB-306	881048	1
19	Base plate kit	880671	1

Part No. configurations:

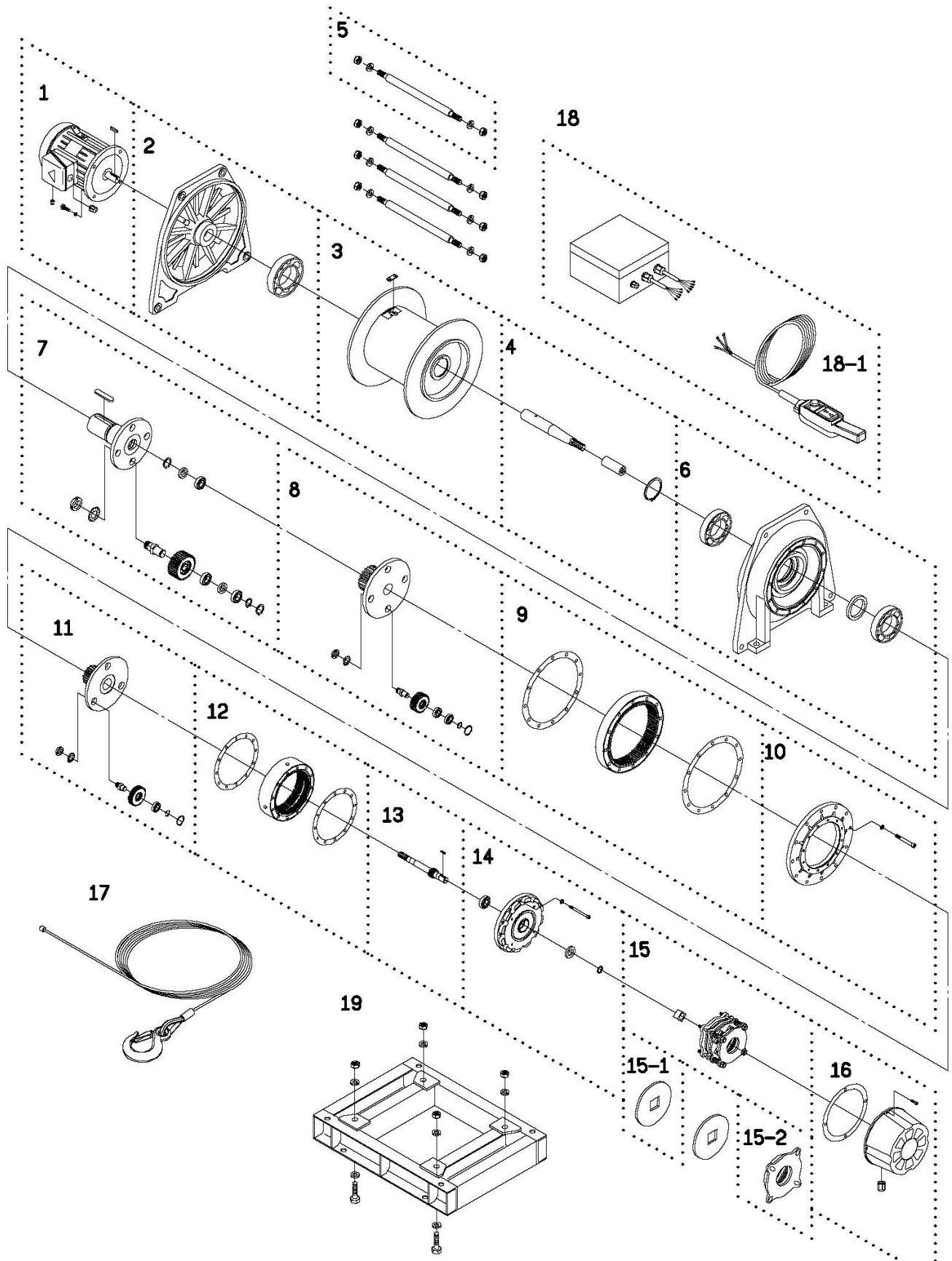
Cycle	Voltage	kw x p	Motor
50 Hz	380 V	5.5 x 6	880674
50 Hz	415 V	5.5 x 6	880675
60 Hz	208 V	5.5 x 6	882168

Cycle	Voltage	Brake kit	Brake coil	LV-320
50 Hz	380 V	881360	880648	881828
50 Hz	415 V	881361	880649	881830
60 Hz	208 V	882170	882171	-

Standard Value for brake coil :

Voltage	208V/220V	380V	415V	440V
Black & Blue wires	28 Ω	108 Ω	117 Ω	126 Ω
Black & Red wires	12 Ω	48 Ω	52 Ω	56 Ω
Red & Blue wires	15 Ω	54 Ω	62 Ω	70 Ω

Winch Assembly



Ver:3