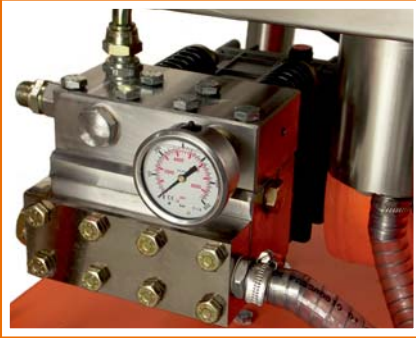


DEN-JET CEX20 SERIES ATEX

HIGH PRESSURE WATER BLASTERS



Stainless steel pump-head.
Integrated unloader valve.



Cast electrical Ex box with
main switch, star delta starter
and overload relay.



Stainless steel top-frame
with gun rest / lance holder.



Galvanized frame with built in
brake and pneumatic wheels.



One centralized and balanced
lifting eye.



CEX20 Series

- Are ATEX compliant EEx equipped Units for Zone II use.

Model:	CEX20-200	CEX20-280	CEX20-350	CEX20-400	CEX20-500
Technical details:					
50 Hz Version					
W.P. Bar / Psi	200 / 2900	280 / 4060	350 / 5075	400 / 5800	500 / 7250
Flow Lpm / Gpm	38 / 10	26 / 6,8	23 / 6	20 / 5,2	16 / 4,2
60 Hz Version					
W.P. Bar / Psi	170 / 2900	250 / 3600	350 / 5075	N/A	500 / 7250
Flow Lpm / Gpm	45 / 11,8	32 / 8,4	23 / 6		16 / 4,2
Electrical Spec.					
Motor Hp / Kw	20 / 15	20 / 15	20 / 15	20 / 15	20 / 15
Voltage 50 / 60 Hz	400 / 440	400 / 440	400 / 440	400 50Hz	400 / 440
Amperage A	28 / 26	28 / 26	28 / 26	28	28 / 26
Dimensions	*) 1060 x 760 x 850				
L x W x H mm					
Weight Kg	275				

All models are CE marked & ATEX Approved

*) Super Slim L x W x H: 1060 x 500 x 850 mm

Standard accessories incl. with each machine:

- 20m Wear resistant high pressure hose
c/w 1/2"BSPP female swivel connections.
- 15m 4 core electrical cable.
- Trigger operated dry-shut gun
c/w 0,85m long stainless steel lance.
- Straight jet spraying nozzle.

Optional accessories for each model:

- 20m Wear resistant high pressure hose
c/w 1/2"BSPP female swivel connections (Extension hose).
- Rotating nozzle.
- Sand blasting kit c/w boron carbide nozzle.
- Mobile abrasive container.
- Spare part kit.

w w w . d e n j e t . c o m

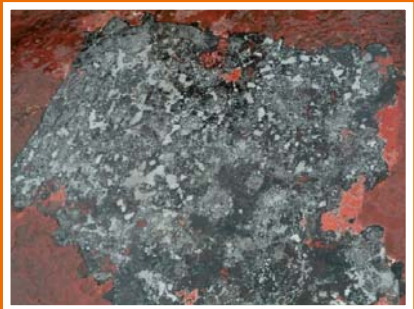
DEN-JET



CE20-500 Super Slim



Rotating Nozzle



Surface - Rotating Nozzle



Sand Blasting Equipment



Surface - Sand blasting

HIGH PRESSURE WATER BLASTERS & ACCESSORIES

UHP accessories (< 40.000PSI)

- Ultra high pressure guns.
- Rotating Nozzles.
- Floor/Deck cleaners.
- Hoses & Fittings.
- Nozzles & Nozzle carriers.
- Filters & Filtration systems.



WB accessories (< 20.000PSI)

- Dump & Dry Shot guns.
- Foot valves.
- Unloader & Safety valves.
- Hoses & Fittings.
- Nozzles & Nozzle carriers.
- Wet Sand-Blasting Equipment.
- Strainer & Filters.



Spareparts for other brands

- Guns & accessories.
- Fittings & connections.
- Internal pump parts.
- Packings & repair kits.
- Nozzles & Nozzle carriers.



CD 25 Series

- Complete product range of Diesel driven high pressure water blasters from 170 to 500 Bar.
- Various accessories.



Company Profile :

Den-Jet's long experience in the high pressure industry has enabled us to create a range of water blasters and accessories, suitable for numerous applications in the industrial and marine industries. DEN-JET supplies complete packages to end-users and distributors, as well as bare shaft pumps and parts to OEM's. Our main goal is to produce quality products at a competitive price level.

Contact: