

Series SQ

One-Touch Fittings

One-Touch Fittings



Features

- ONE ACTION INSERTS THE TUBE TO RELEASE AND CONNECT EASILY
- THE SQH TYPE HAS INTERIOR AND EXTERIOR HEXAGONAL SHAPES FOR EFFICIENT PIPING IN LIMITED SPACES
- THE MAIN BODY OF THE SQL AND SQT TYPES IS A ROTATING STRUCTURE FOR EFFICIENT PIPING
- THE SCREW SECTION HAS O-RINGS, OR IS SEALANT COATED

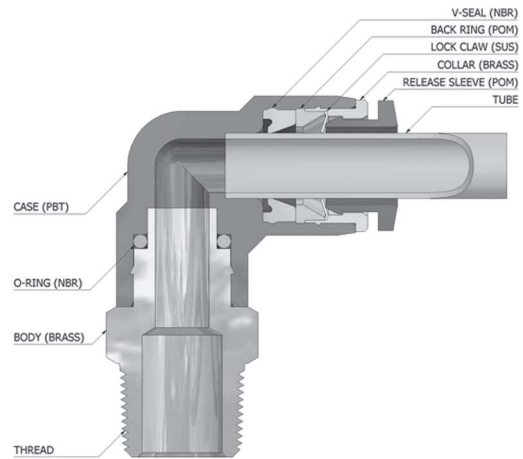
How to Order

SQ L 06 - 01 S - X2-W

1 2 3 4 5

- 1 Model
- 2 Applicable Tube O. D.
 - 04 : Ø4
 - 06 : Ø6
 - 08 : Ø8
 - 10 : Ø10
 - 12 : Ø12
- 3 Port Size
 - M5 : M5 x 0.8
 - 01 : R(c) 1/8
- 4 Sealant Screw
 - S : Sealant
- 5 Nickel Coated
 - Blank : Standard Type
 - X2 : Copper-free(Nickel Coated)

Structural Diagram



Standard Specifications

Fluid Type	Air
Max. Operating Pressure	0~150psi (0~9.9kgf/cm ²)
Ambient and Fluid Temperature	0~60 °C
Applicable Tube O.D	Ø4, Ø6, Ø8, Ø10, Ø12

Series SQ

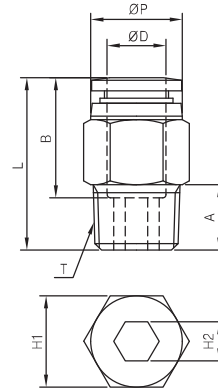
SQH



METRIC-BSPT(R)

Unit : mm

MODEL	ØD (Tube Size)	T (Thread Size)	ØP	L	A	B	H1	H2 (Hex.)	Weight (g)
SQH 04-M5A	4	M5×0.8	10.0	20.8	4.6	14.7	Ø10	2	6.0
SQH 04-M5		M5×0.8		20.8	4.0		H10	-	7.0
SQH 04-01S		R 1/8		21.9	8.0		H10	3	9.0
SQH 04-02S		R 1/4		20.9	10.0		H14	3	16.0
SQH 06-M5A	6	M5×0.8	12.0	23.1	4.6	16.4	Ø12	2	10.0
SQH 06-M5		M5×0.8		23.1	4.0		H12	-	10.0
SQH 06-01S		R 1/8		22.4	8.0		H12	4	10.0
SQH 06-02S		R 1/4		21.9	10.0		H14	5	14.0
SQH 06-03S	R 3/8	22.9	11.0	H17	5	25.0			
SQH 08-01S	8	R 1/8	14.0	28.4	8.0	18.4	H14	5	15.0
SQH 08-02S		R 1/4		26.4	10.0		H14	6	16.0
SQH 08-03S		R 3/8		23.9	11.0		H17	6	24.0
SQH 08-04S		R 1/2		29.4	14.0		H19	6	49.0
SQH 10-01S	10	R 1/8	16.1	29.8	8.0	19.6	H17	5	21.0
SQH 10-02S		R 1/4		31.3	10.0		H17	6	24.0
SQH 10-03S		R 3/8		27.4	11.0		H17	8	24.0
SQH 10-04S		R 1/2		29.8	14.0		H19	8	45.0
SQH 12-02S	12	R 1/4	19.0	33.7	10.0	21.9	H19	6	30.0
SQH 12-03S		R 3/8		30.7	11.0		H19	8	29.0
SQH 12-04S		R 1/2		30.2	14.0		H19	8	38.0



SN

SP2000

SP4000

SQ

SC

SP

SHF · SHS

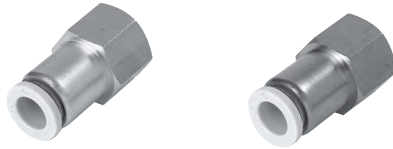
DC

SQ2

ST

SF

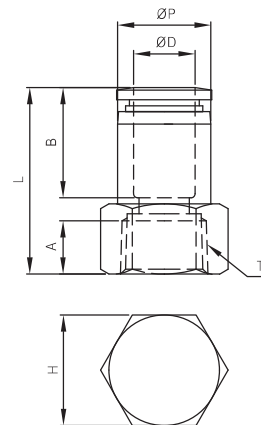
SQF



METRIC-BSPT(R)

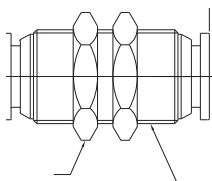
Unit : mm

MODEL	ØD (Tube Size)	T (Thread Size)	ØP	L	A	B	H (Hex.)	Weight (g)
SQF 04-01	4	Rc 1/8	10.0	27.0	9.0	14.7	14	17.0
SQF 04-02		Rc 1/4		29.0	11.0		17	22.0
SQF 06-01	6	Rc 1/8	12.0	28.2	9.0	16.4	14	18.0
SQF 06-02		Rc 1/4		30.2	11.0		17	24.0
SQF 06-03		Rc 3/8		31.2	12.0		22	38.0
SQF 08-01	8	Rc 1/8	14.0	29.4	9.0	18.4	14	19.0
SQF 08-02		Rc 1/4		31.4	11.0		17	24.0
SQF 08-03		Rc 3/8		32.4	12.0		22	39.0
SQF 08-04		Rc 1/2		34.4	14.0		24	41.0
SQF 10-01	10	Rc 1/8	16.4	32.5	9.0	19.6	17	31.0
SQF 10-02		Rc 1/4		32.5	11.0		17	26.0
SQF 10-03		Rc 3/8		33.5	12.0		22	41.0
SQF 10-04		Rc 1/2		35.5	14.0		24	43.0
SQF 12-02	12	Rc 1/4	19.0	37.1	11.0	21.9	22	54.0
SQF 12-03		Rc 3/8		37.1	12.0		22	46.0
SQF 12-04		Rc 1/2		39.1	14.0		24	50.0



Series SQ

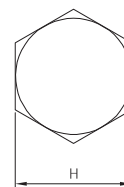
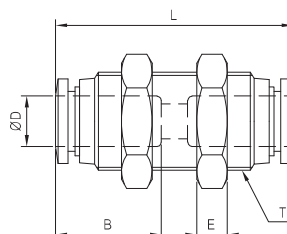
SQE-00



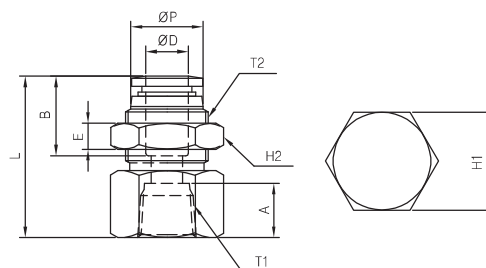
METRIC-BSPT(R)

MODEL	ØD (Tube Size)	T (Thread Size)	L	E	B	H (Hex.)	Weight (g)
SQE 04-00	4	M12×1.0	35.5	4	14.7	14	20.0
SQE 06-00	6	M14×1.0	39.9	4	16.4	17	29.0
SQE 08-00	8	M16×1.0	42.2	5	18.4	19	39.0
SQE 10-00	10	M20×1.0	45.0	5	19.6	24	66.0
SQE 12-00	12	M22×1.0	50.3	5	21.9	26	83.0

Unit : mm



SQE



METRIC-BSPT(R)

MODEL	ØD (Tube Size)	T1 (Thread Size)	ØP	T2 (Thread Size)	L	E	A	B	H1 (Hex.)	H2 (Hex.)	Weight (g)
SQE 04-01	4	Rc 1/8	10.0	M12×1.0	27.0	4	9.0	14.7	14	14	20.0
SQE 06-01	6	Rc 1/8	12.0	M14×1.0	30.2	4	9.0	16.4	17	17	34.0
SQE 06-02		Rc 1/4									28.0
SQE 08-01	8	Rc 1/8	14.0	M16×1.0	31.4	5	9.0	18.4	19	19	45.0
SQE 08-02		Rc 1/4									40.0
SQE 08-03		Rc 3/8									46.0
SQE 10-02	10	Rc 1/4	16.1	M20×1.0	33.5	5	11.0	19.6	24	24	71.0
SQE 10-03		Rc 3/8									66.0
SQE 10-04		Rc 1/2									58.0
SQE 12-02	12	Rc 1/4	19.0	M22×1.0	38.3	5	11.0	21.9	24	26	85.0
SQE 12-03		Rc 3/8									76.0
SQE 12-04		Rc 1/2									70.0

Unit : mm

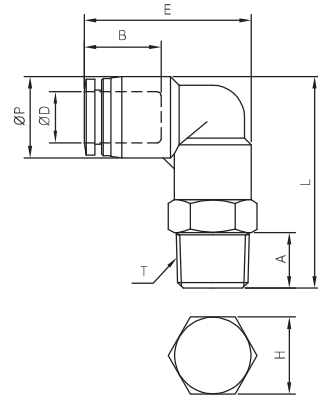
Series SQ

SQL



METRIC-BSPT(R)

MODEL	ØD (Tube Size)	T (Thread Size)	ØP	L	E	A	B	H (Hex.)	Weight (g)
SQL04-M5	4	M5×0.8	10.5	25.7	23.6	4.0	14.9	10	6.0
SQL04-01S		R1/8		29.7		8.0		10	10.0
SQL04-02S		R1/4		31.7		10.0		14	15.0
SQL06-M5	6	M5×0.8	12.5	28.7	26.3	4.0	16.4	12	7.0
SQL06-01S		R 1/8		32.7		8.0		12	13.0
SQL06-02S		R 1/4		35.7		10.0		14	19.0
SQL06-03S	R 3/8	36.7	11.0	17	27.0				
SQL08-01S	8	R 1/8	14.8	35.4	30.3	8.0	18.7	14	18.0
SQL08-02S		R 1/4		38.4		10.0		14	22.0
SQL08-03S		R 3/8		39.4		11.0		17	27.0
SQL08-04S	R 1/2	42.4	14.0	21	43.0				
SQL10-01S	10	R 1/8	17.5	37.2	33.0	8.0	20.1	17	26.0
SQL10-02S		R 1/4		40.2		10.0		17	28.0
SQL10-03S		R 3/8		41.2		11.0		17	30.0
SQL10-04S	R 1/2	44.2	14.0	21	48.0				
SQL12-02S	12	R 1/4	20.5	44.6	38.1	10.0	22.8	19	40.0
SQL12-03S		R 3/8		45.6		11.0		19	43.0
SQL12-04S		R 1/2		48.6		14.0		21	52.0



SN

SP2000

SP4000

SQ

SC

SP

SHF · SHS

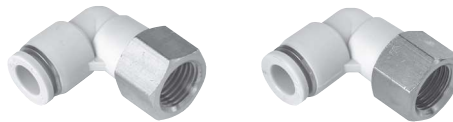
DC

SQ2

ST

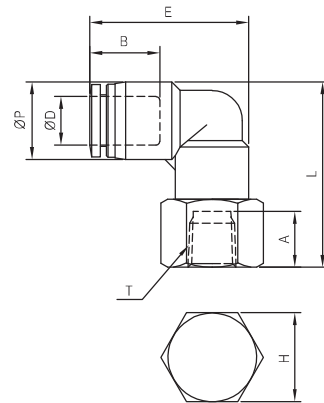
SF

SQLF



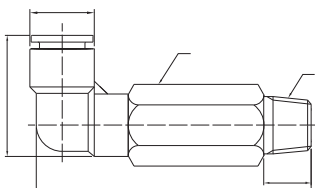
METRIC-BSPT(R)

MODEL	ØD (Tube Size)	T (Thread Size)	ØP	L	E	A	B	H (Hex.)	Weight (g)
SQLF 04-M5	4	M5×0.8	10.5	26.7	23.6	8.0	14.9	10	10.0
SQLF 04-01		Rc 1/8		27.7		9.0		14	15.0
SQLF 04-02		Rc 1/4		29.7		11.0		17	20.0
SQLF 06-M5	6	M5×0.8	12.5	29.7	26.3	8.0	16.4	12	16.0
SQLF 06-01		Rc 1/8		30.7		9.0		14	17.0
SQLF 06-02		Rc 1/4		32.7		11.0		17	23.0
SQLF 06-03	Rc 3/8	33.7	12.0	22	36.0				
SQLF 08-01	8	Rc 1/8	14.8	33.4	30.3	9.0	18.7	14	19.0
SQLF 08-02		Rc 1/4		35.4		11.0		17	26.0
SQLF 08-03		Rc 3/8		36.4		12.0		22	38.0
SQLF 10-02	10	Rc 1/4	17.5	37.2	33.0	11.0	20.1	17	29.0
SQLF 10-03		Rc 3/8		38.2		12.0		22	42.0
SQLF 10-04		Rc 1/2		40.2		14.0		24	44.0
SQLF 12-02	12	Rc 1/4	20.5	41.6	38.1	11.0	22.8	19	40.0
SQLF 12-03		Rc 3/8		42.6		12.0		22	48.0
SQLF 12-04		Rc 1/2		44.6		14.0		24	49.0



Series SQ

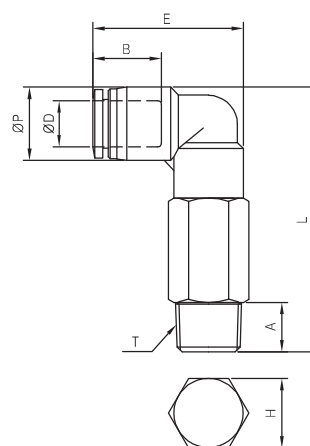
SQW



METRIC-BSPT(R)

Unit : mm

MODEL	ØD (Tube Size)	T (Thread Size)	ØP	L	E	A	B	H (Hex.)	Weight (g)
SQW 04-M5	4	M5×0.8	10.5	38.2	23.6	4.1	14.9	10	18.0
SQW 04-01S		R1/8		40.7		8.0		10	16.0
SQW 04-02S		R1/4		42.7		10.0		14	28.0
SQW 06-M5	6	M5×0.8	12.5	43.7	26.3	4.1	16.4	12	25.0
SQW 06-01S		R 1/8		46.2		8.0		12	25.0
SQW 06-02S		R 1/4		48.2		10.0		14	33.0
SQW 06-03S	R 3/8	49.2	11.0	17	48.0				
SQW 08-01S	8	R 1/8	14.8	51.4	30.3	8.0	18.7	14	37.0
SQW 08-02S		R 1/4		53.4		10.0		14	37.0
SQW 08-03S		R 3/8		54.4		11.0		17	60.0
SQW 08-04S	R 1/2	57.4	14.0	22	90.0				
SQW 10-01S	10	R 1/8	17.5	56.4	33.0	8.0	20.1	17	65.0
SQW 10-02S		R 1/4		58.4		10.0		17	65.0
SQW 10-03S		R 3/8		59.4		11.0		17	57.0
SQW 10-04S	R 1/2	62.4	14.0	22	100.0				
SQW 12-02S	12	R 1/4	20.5	66.1	38.1	10.0	22.8	19	90.0
SQW 12-03S		R 3/8		67.1		11.0		19	84.0
SQW 12-04S		R 1/2		70.1		14.0		22	116.0



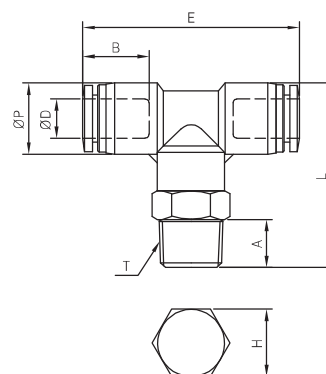
SQT



METRIC-BSPT(R)

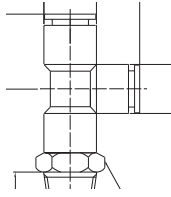
Unit : mm

MODEL	ØD (Tube Size)	T (Thread Size)	ØP	L	E	A	B	H (Hex.)	Weight (g)
SQT 04-M5	4	M5×0.8	10.5	25.7	37.3	4.0	14.9	10	10.0
SQT 04-01S		R1/8		29.7		8.0		10	11.0
SQT 04-02S		R1/4		31.7		10.0		14	17.0
SQT 06-M5	6	M5×0.8	12.5	28.7	40.7	4.0	16.4	12	15.0
SQT 06-01S		R 1/8		32.7		8.0		12	17.0
SQT 06-02S		R 1/4		35.7		10.0		14	21.0
SQT 06-03S	R 3/8	36.7	11.0	17	29.0				
SQT 08-01S	8	R 1/8	14.8	35.4	45.1	8.0	18.7	14	21.0
SQT 08-02S		R 1/4		38.4		10.0		14	24.0
SQT 08-03S		R 3/8		39.4		11.0		17	31.0
SQT 08-04S	R 1/2	42.4	14.0	21	54.0				
SQT 10-01S	10	R 1/8	17.5	37.2	47.4	8.0	20.1	17	33.0
SQT 10-02S		R 1/4		40.2		10.0		17	35.0
SQT 10-03S		R 3/8		41.2		11.0		17	36.0
SQT 10-04S	R 1/2	44.2	14.0	21	60.0				
SQT 12-02S	12	R 1/4	20.5	44.6	55.3	10.0	22.8	19	47.0
SQT 12-03S		R 3/8		45.6		11.0		19	50.0
SQT 12-04S		R 1/2		48.6		14.0		21	60.0



Series SQ

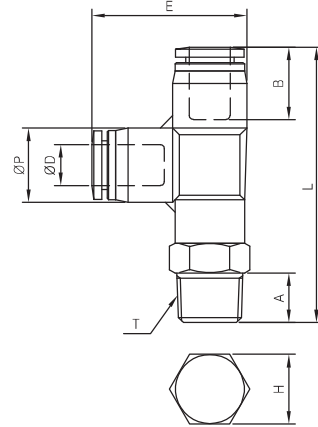
SQY



METRIC-BSPT(R)

MODEL	ØD (Tube Size)	T (Thread Size)	ØP	L	E	A	B	H (Hex.)	Weight (g)
SQY 04-M5	4	M5×0.8	10.6	41.6	24.9	4.0	14.9	10	10.0
SQY 04-01S		R1/8		45.1		8.0		10	12.0
SQY 04-02S		R1/4		47.1		10.0		14	18.0
SQY 06-M5	6	M5×0.8	13.0	44.9	27.9	4.0	16.4	12	15.0
SQY 06-01S		R1/8		48.4		8.0		12	19.0
SQY 06-02S		R1/4		51.4		10.0		14	23.0
SQY 06-03S	R3/8	52.4	11.0	17	31.0				
SQY 08-01S	8	R1/8	15.0	52.5	31.3	8.0	18.7	14	17.0
SQY 08-02S		R1/4		55.5		10.0		14	25.0
SQY 08-03S		R3/8		56.5		11.0		17	30.0
SQY 08-04S	R1/2	59.5	14.0	21	54.0				
SQY 10-01S	10	R1/8	18.0	55.7	34.7	8.0	20.1	17	34.0
SQY 10-02S		R1/4		58.7		10.0		17	36.0
SQY 10-03S		R3/8		59.7		11.0		17	38.0
SQY 10-04S	R1/2	62.7	14.0	21	60.0				
SQY 12-02S	12	R1/4	20.8	65.0	40.5	10.0	22.8	19	50.0
SQY 12-03S		R3/8		66.0		11.0		19	52.0
SQY 12-04S		R1/2		69.0		14.0		21	66.0

Unit : mm



SN

SP2000

SP4000

SQ

SC

SP

SHF · SHS

DC

SQ2

ST

SF

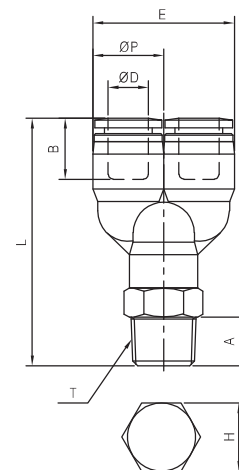
SQU



METRIC-BSPT(R)

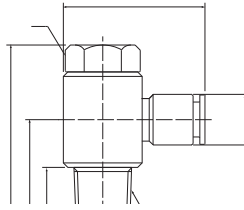
MODEL	ØD (Tube Size)	T (Thread Size)	ØP	L	E	A	B	H (Hex.)	Weight (g)
SQU 04-M5	4	M5×0.8	10.5	39.5	21.0	4.0	15.6	10	11.0
SQU 04-01S		R1/8		43.5		8.0		10	12.0
SQU 04-02S		R1/4		45.5		10.0		14	18.0
SQU 06-M5	6	M5×0.8	12.5	40.4	25.0	4.0	16.9	12	16.0
SQU 06-01S		R1/8		44.4		8.0		12	17.0
SQU 06-02S		R1/4		47.4		10.0		14	22.0
SQU 06-03S	R3/8	48.4	11.0	17	32.0				
SQU 08-01S	8	R1/8	14.5	47.8	29.0	8.0	19.0	14	22.0
SQU 08-02S		R1/4		50.8		10.0		14	24.0
SQU 08-03S		R3/8		51.8		11.0		17	38.0
SQU 08-04S	R1/2	54.8	14.0	21	50.0				
SQU 10-01S	10	R1/8	17.6	51.2	35.2	8.0	20.2	17	35.0
SQU 10-02S		R1/4		54.2		10.0		17	37.0
SQU 10-03S		R3/8		55.2		11.0		17	40.0
SQU 10-04S	R1/2	58.2	14.0	21	63.0				
SQU 12-02S	12	R1/4	21.0	59.1	42.0	10.0	22.6	19	52.0
SQU 12-03S		R3/8		60.1		11.0		19	53.0
SQU 12-04S		R1/2		63.1		14.0		21	66.0

Unit : mm



Series SQ

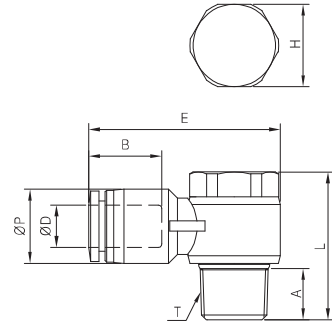
SQV



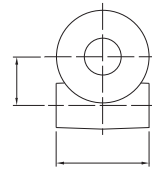
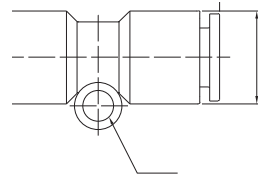
METRIC-BSPT(R)

Unit : mm

MODEL	ØD (Tube Size)	T (Thread Size)	ØP	L	E	A	B	H (Hex.)	Weight (g)
SQV 04-M5	4	M5×0.8	10.5	18.2	25.3	3.6	14.9	8	8.0
SQV 04-01S		R 1/8		25.0	30.4	7.5		11	15.0
SQV 04-02S		R 1/4		28.8	34.4	10.0		15	27.0
SQV 06-M5	6	M5×0.8	12.5	18.2	27.7	3.6	16.4	8	9.0
SQV 06-01S		R 1/8		25.0	31.2	7.5		11	16.0
SQV 06-02S		R 1/4		28.8	35.2	10.0		15	27.0
SQV 06-03S		R 3/8		32.7	38.7	11.0		19	48.0
SQV 08-01S	8	R 1/8	14.5	25.0	33.3	7.5	18.7	11	17.0
SQV 08-02S		R 1/4		28.8	37.3	10.0		15	28.0
SQV 08-03S		R 3/8		32.7	40.3	11.0		19	50.0
SQV 08-04S		R 1/2		39.0	46.2	14.0		24	77.0
SQV 10-02S	10	R 1/4	17.5	28.8	38.8	10.0	20.1	15	32.0
SQV 10-03S		R 3/8		32.7	42.1	11.0		19	51.0
SQV 10-04S		R 1/2		39.0	47.3	14.0		24	78.0
SQV 12-03S	12	R 3/8	20.5	32.7	45.1	11.0	22.8	19	53.0
SQV 12-04S		R 1/2		39.0	50.0	14.0		24	82.0



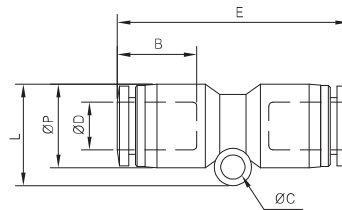
SQH-00



METRIC-BSPT(R)

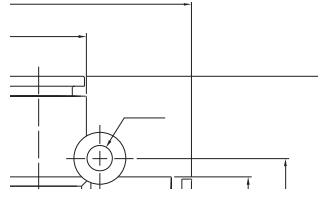
Unit : mm

MODEL	ØD (Tube Size)	ØP	L	E	ØC	B	Weight (g)
SQH 04-00	4	10.5	12.7	34.3	3.3	14.9	4.0
SQH 06-00	6	12.5	14.7	36.5	3.3	16.4	7.0
SQH 08-00	8	14.5	17.6	40.1	4.3	18.7	9.0
SQH 10-00	10	17.5	20.0	43.4	4.3	20.1	13.0
SQH 12-00	12	20.5	23.3	48.3	4.3	22.8	20.0



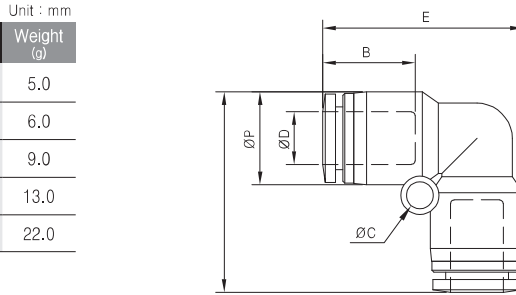
Series SQ

SQL-00



METRIC-BSPT(R)

MODEL	ØD (Tube Size)	ØP	L	E	ØC	B	Weight (g)
SQL 04-00	4	10.6	24.1	24.1	3.3	14.9	5.0
SQL 06-00	6	12.5	27.3	27.3	4.3	16.4	6.0
SQL 08-00	8	14.5	31.3	31.3	4.3	18.7	9.0
SQL 10-00	10	17.5	33.9	33.9	4.3	20.1	13.0
SQL 12-00	12	20.5	38.8	38.8	4.3	22.8	22.0



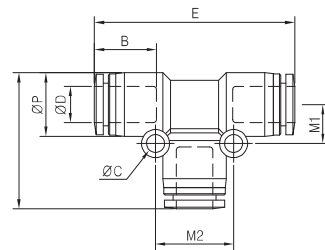
- SN
- SP2000
- SP4000
- SQ**
- SC
- SP
- SHF · SHS
- DC
- SQ2
- ST
- SF

SQT-00



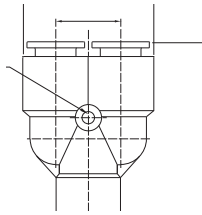
METRIC-BSPT(R)

MODEL	ØD (Tube Size)	ØP	L	E	ØC	B	M1	M2	Weight (g)
SQT 04-00	4	10.5	24.0	36.3	3.3	14.9	6.4	12.6	7.0
SQT 06-00	6	12.5	27.3	41.5	3.3	16.4	7.7	15.4	10.0
SQT 08-00	8	14.5	31.0	45.6	4.3	18.7	8.9	17.8	13.0
SQT 10-00	10	17.5	34.1	48.4	4.3	20.1	9.8	19.7	19.0
SQT 12-00	12	20.5	40.1	57.3	4.3	22.8	13.2	26.3	29.0



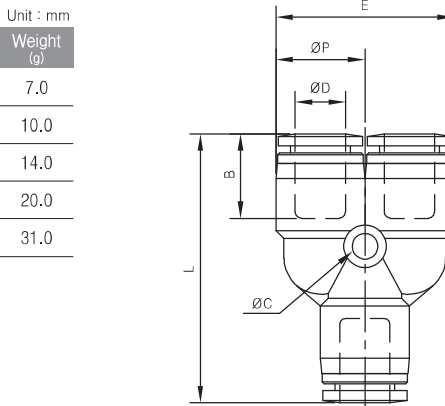
Series SQ

SQU-00



METRIC-BSPT(R)

MODEL	ØD (Tube Size)	ØP	L	E	ØC	B	Weight (g)
SQU 04-00	4	10.5	36.3	21.0	3.3	16.1	7.0
SQU 06-00	6	13.0	39.3	26.0	3.3	17.6	10.0
SQU 08-00	8	14.6	44.1	29.2	4.3	19.0	14.0
SQU 10-00	10	17.5	47.1	35.0	4.5	19.8	20.0
SQU 12-00	12	21.0	54.1	42.0	4.5	22.7	31.0

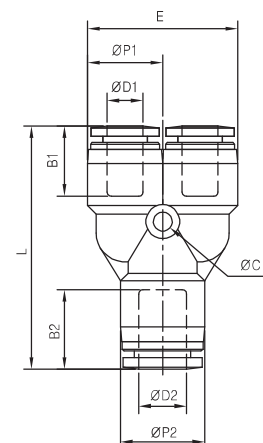


SQU-R



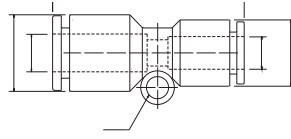
METRIC-BSPT(R)

MODEL	ØD1 (Tube Size)	ØD2 (Tube Size)	ØP1	ØP2	L	E	ØC	B1	B2	Weight (g)
SQU 04-06	4	6	10.5	13.0	37.8	21.0	3.3	16.1	17.6	7.0
SQU 06-08	6	8	13.0	14.6	42.2	26.0	3.3	17.6	19.0	11.0
SQU 08-10	8	10	14.6	17.5	44.8	29.2	4.3	19.0	19.7	15.0
SQU 10-12	10	12	17.5	21.0	50.6	35.0	4.5	19.8	22.7	24.0



Series SQ

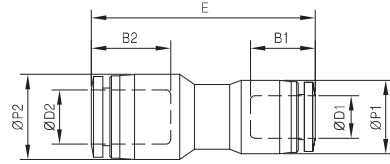
SQH-R



METRIC-BSPT(R)

Unit : mm

MODEL	ØD1 (Tube Size)	ØD2 (Tube Size)	ØP1	ØP2	E	B1	B2	Weight (g)
SQH 04-06	4	6	10.5	12.5	35.2	14.9	16.4	6.0
SQH 06-08	6	8	12.5	14.5	38.1	16.4	18.7	8.0
SQH 08-10	8	10	14.5	17.5	40.3	18.7	20.1	10.0
SQH 10-12	12	12	17.5	20.5	43.8	20.1	22.8	14.0



SN

SP2000

SP4000

SQ

SC

SP

SHF · SHS

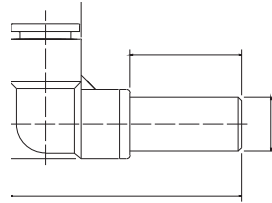
DC

SQ2

ST

SF

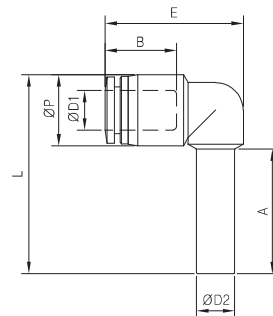
SQL-99



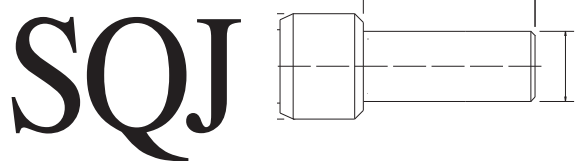
METRIC-BSPT(R)

Unit : mm

MODEL	ØD1 (Tube Size)	ØD2 (Tube Size)	ØP	L	E	A	B	Weight (g)
SQL04-99	4	4	10.5	33.6	22.6	22.0	14.9	4.0
SQL06-99	6	6	12.5	37.6	25.3	24.0	16.4	9.0
SQL08-99	8	8	14.8	41.5	28.8	26.0	18.7	8.0
SQL10-99	10	10	17.5	46.6	31.2	28.0	20.1	10.0
SQL12-99	12	12	20.5	51.7	36.0	30.0	22.8	17.0



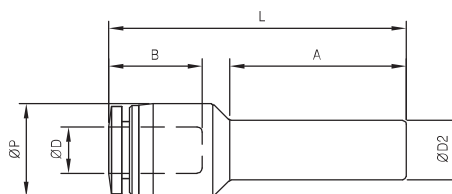
Series SQ



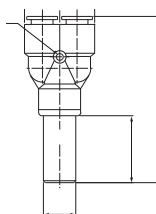
METRIC-BSPT(R)

Unit : mm

MODEL	ØD (Tube Size)	ØD2	ØP	L	A	B	Weight (g)
SQJ 04-06	4	6	10.5	37.8	21.7	14.9	3.0
SQJ 04-08	4	8	10.5	39.8	24.7	14.9	4.0
SQJ 06-08	6	8	12.5	40.0	23.7	16.4	5.0
SQJ 06-10	6	10	12.5	44.0	28.7	16.4	6.0
SQJ 06-12	6	12	12.5	50.0	34.4	16.4	6.0
SQJ 08-10	8	10	14.8	46.8	27.6	18.7	7.0
SQJ 08-12	8	12	14.8	50.8	32.6	18.7	7.0
SQJ 10-12	10	12	17.5	50.8	31.2	20.1	8.0



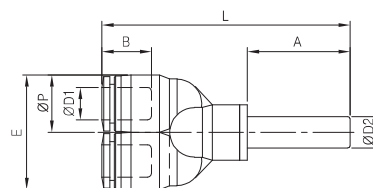
SQU-99



METRIC-BSPT(R)

Unit : mm

MODEL	ØD (Tube Size)	ØD2	ØP	L	E	A	B	Weight (g)
SQU 04-99	4	4	10.5	56.5	21.0	24.0	15.6	5.0
SQU 06-99	6	6	12.5	58.4	25.0	25.0	16.9	9.0
SQU 08-99	8	8	14.5	62.8	29.0	26.0	19.0	11.0
SQU 10-99	10	10	17.6	68.5	35.2	28.0	20.2	18.0
SQU 12-99	12	12	21.0	75.6	42.0	30.0	22.6	28.0



Series SQ

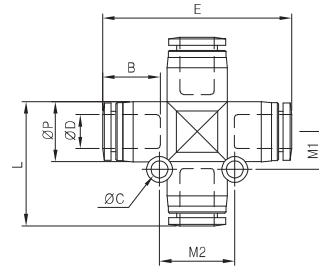
SQZ-00



METRIC-BSPT(R)

MODEL	∅D (Tube Size)	∅P	L	E	∅C	B	M1	M2	Weight (g)
SQZ 04-00	4	10.5	23.2	35.9	3.3	14.9	6.4	12.7	9.0
SQZ 06-00	6	12.5	27.0	41.5	3.3	16.4	7.4	14.9	12.0
SQZ 08-00	8	14.5	30.0	45.6	4.2	18.7	9.1	18.2	18.0
SQZ 10-00	10	17.5	32.9	48.4	4.3	20.1	10.1	20.3	24.0
SQZ 12-00	12	20.5	37.9	55.3	4.3	22.8	11.8	23.7	40.0

Unit : mm



SN

SP2000

SP4000

SQ

SC

SP

SHF · SHS

DC

SQ2

ST

SF