



ULTRA HIGH PURITY
METAL FACE SEAL
& WELD FITTINGS

www.unilok.com



Uni-Lok® Uni-Lok corporation

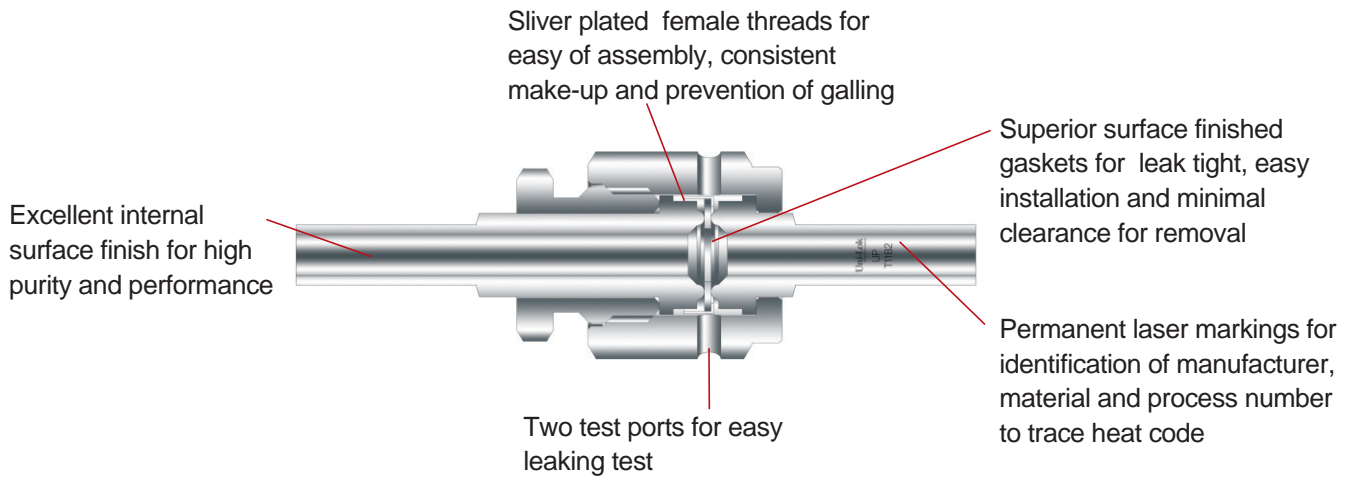
Weld & Metal Face Seal Fittings

Uni-Lok® Weld & Metal Face Seal (UCR) fittings are designed and manufactured as high performance and high purity components by our own know-how to be accumulated throughout the years.

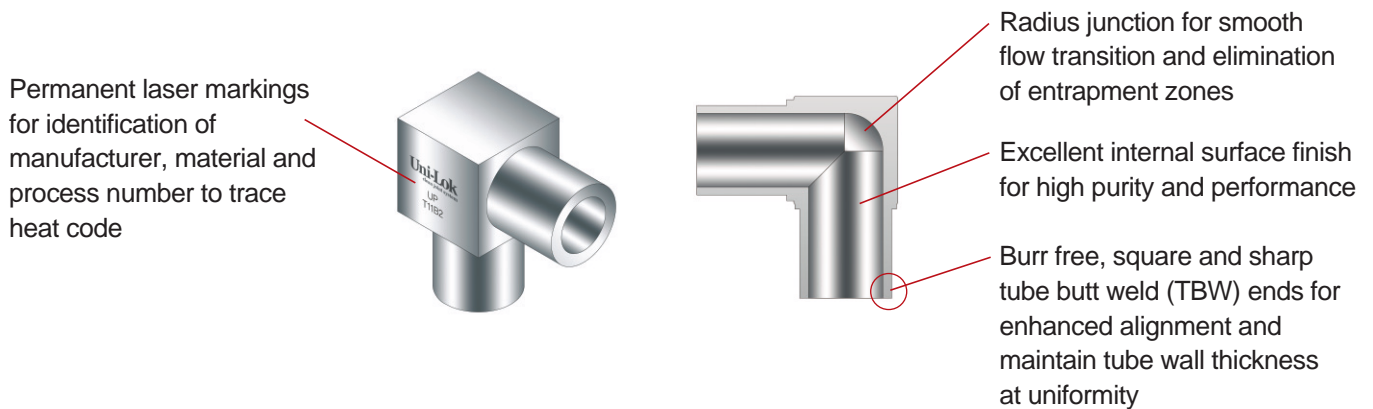
Uni-Lok® guarantees high quality butt welding between tube and fittings as well as leak free assembly for critical applications.

Features

Metal Face Seal (UCR) Fittings



Weld Fittings



Internal Surface Finish Levels

Designator	Surface Finish(μm)	
	Average	Maximum
BA	< 0.4	< 1.6
EP	< 0.125	< 0.4

Reference Specification :
SEMA-90120400B

Surface Analysis

SEM, ESCA/XPS, AES analysis for all electro polished products are used to measure surface cleanliness and anticorrosion requirements in accordance with SEMA specifications.

SEM - SEMA 90120401B-STD

ESCA/XPS - SEMA 90120403B-STD

AES - SEMA 91060573B-STD

Plating

Female nuts are silver plated for easy of assembly, consistent make-up, prevention of galling and reduction of the torque required for fitting assembling.

Materials

Materials	Specification
Glands, Unions, Weld Fittings	
VIM/VAR	Forging - ASTM A182 Bar Stock - ASTM SA479
VCR/VAR	
316LSS	
Nuts, Plugs, Caps, UCR Threaded Fittings	
316LSS	Forging - ASTM A182 Bar Stock - ASTM SA479
Gaskets	
Nickel	ASTM B162
316LSS	ASTM A167

Both VCR/VAR and 316LSS are UHP(Ultra High Purity) 316LSS material with low Sulfur and Manganese in comply with SEMI F-20.

Pressure Ratings

Tube O.D.	Wall Thickness	Pressure Rating	
		psig	bar
1/4"	1.00mm	5200	359
	0.89mm		
3/8"	1.00mm	3350	231
	0.89mm		
1/2"	1.24mm	3750	259
3/4"	1.65mm	3350	231
1"	1.65mm	2400	265

0.89mm(0.035") wall thick fittings are available upon request. When ordering, be sure to add **-A** to the part number.

Pressure ratings are calculated in accordance with ANSI/ASME B31.3 for stainless steel pressure piping at room temperature.

Temperature Ratings

Components	Materials	°F	°C
Fittings	VIM/VAR	1000	537
	VCR/VAR		
	316LSS		
Gaskets	316LSS	1000	537
	Nickel	600	315

Helium Leak Test

Uni-Lok fittings are rated to a helium leak rate of less than 1×10^{-9} mbar.l/sec and tested in accordance with SEMA-90120391B-STD and SEMI F1-96.

Particle Contribution Test

According to ASTM F1394-92.

Moisture Contribution Test

According to SEMA-90120397B-STD.

Cleaning

All components are precisely cleaned with 18MΩ deionized water after the passivation procedure. Reference specification : SEMI E49.6.

Assembling

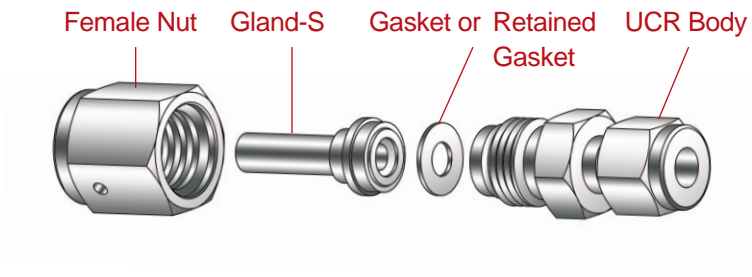
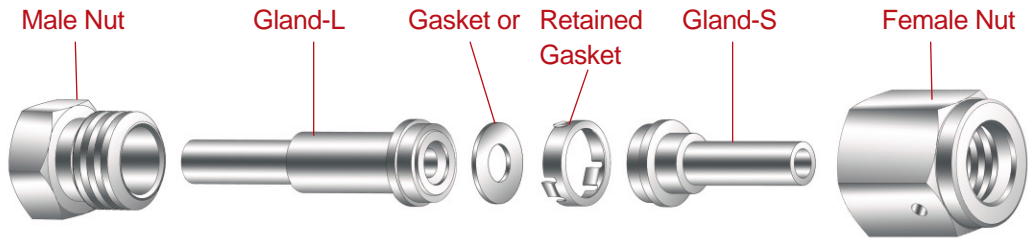
According to SEMI E49.6.

Packaging

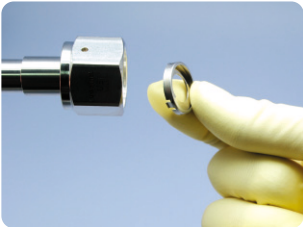
Each component is double bagged to ensure component cleanliness and to protect them from environmental contamination.

Referenced specification : SEMI E49.1.

Typical Assemblies



Installation Instruction



Step A.
Place gasket into female nut.

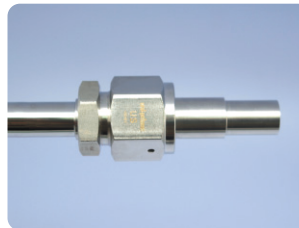


Step C.
Tighten female nut 1/8 turn past finger tight holding the backup wrench stationary.

or



Step AA.
Guide retained gasket over gland UCR face.



Step D.
Confirm face seal and gasket's position again.



Step B.
Tighten female nut to male nut or UCR body finger tight.

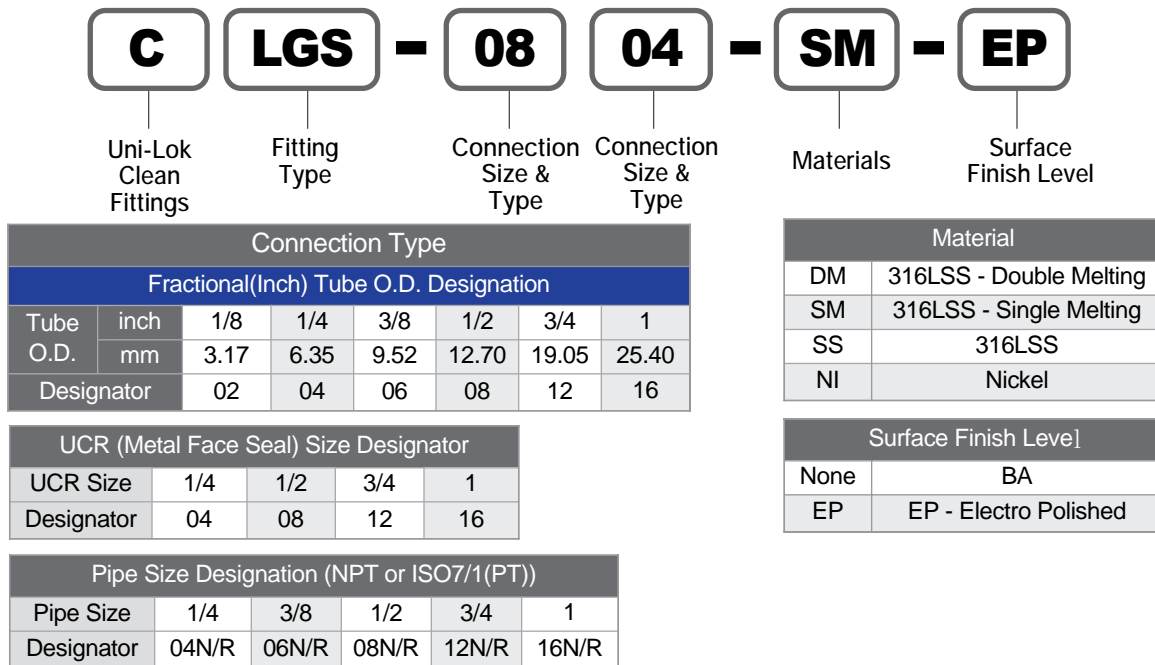
Metal face seal connections are remakeable only using new gasket for each remake.

How To Order

Weld Fittings

Uni-Lok weld fittings are ordered by part number as shown as below.


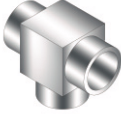






Example : The following part number, **CLGS-0804-SM-EP** is designated for Long Gland S, 1/2" UCR x 1/4" TBW", Single Melting 316LSS, EP.





Visual Index

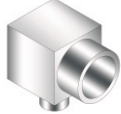
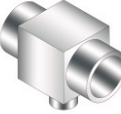


Weld Fittings

	Micro Elbow 45° CMVE	8
	Micro Tribow CMTB	9
	Long Elbow 90° CLE	10
	Reducing Long Tee CLRT	11
	Micro Gland-S CMGS	12
	Short Gland L CSGL	12
	Socket Weld Short Gland CSGWS	14
	Blind Gland CBG	14
	UCR Plug CPG	15
	UCR Gasket CGT	16

	Micro Elbow 90° CME	8
	Micro Tee CMT	8
	Micro Cross CMC	9
	Reducing Long Elbow 90° CLRE	10
	Reducing Long Union CLRU	11
	Micro Gland L CMGL	12
	Long Gland S CLGS	13
	Socket Weld Long Gland CLGWS	14

- Caps, Plugs, Nuts & Gaskets

	UCR Female Nut CFN	15
	UCR Gasket Retained CGTR	16

	Reducing Micro Elbow 90° CMRE	8
	Reducing Micro Tee CMRT	9
	Reducing Micro Union CMRU	9
	Long Tee CLT	10

Metal Face Seal (UCR) Fittings - Glands

	Short Gland S CSGS	12
	Long Gland L CLGL	13
	Reducing Socket Weld Long Gland CLGRWS	14
	UCR Cap CCP	15
	UCR Male Nut CMN	15
	UCR Gasket Blind CGTB	16

- High Flow Components



HR Bulkhead Adapter
CHBA

17



HR Gland
CHG

17



HR Adapter
CHA

17



HR Female Nut
CHFN

17



HR Male Nut
CHMN

17

UCR Threaded Fittings
- UCR to UCR



Bulkhead Double Male Union
CBDMU

18



Double Male Union
CDMU

18



Reducing Double Male Union
CDMRU

18



Union Cross
CUC

19



Union Elbow
CEU

18



Union Tee
CUT

19



Reducing Bushing
CRB

20



Reducing Double Female Union
CDFRU

19



Reducing Adapter
CRA

19

- UCR to TBW



TBW Adapter
CAWB

21



Coupling
CC

20

- UCR to Uni-Lok



Uni-Lok Connector
CULC

21



Bulkhead TBW Adapter
CBAWB

21

- UCR to Thread



Male Connector
CUMC

22



Bulkhead Uni-Lok Connector
CBULC

21



Female Connector
CUFC

22

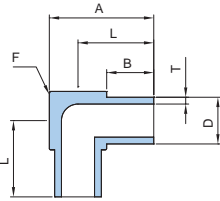
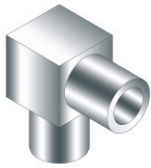


Male Elbow
CUME

22

Micro Elbow 90°

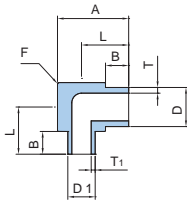
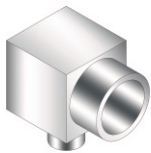
CME



Part No.	Tube O.D. D		Tube W.T. T		Dimension (mm)			Body Cube
	inch	mm	inch	mm	A	B	L	
CME-02-	1/8	3.17	0.028	0.71	14.29	6.35	10.32	7.94
CME-04-*A	1/4	6.35	0.035	0.89				
CME-04-	1/4	6.35	0.039	1.00	17.46	6.35	11.91	11.11
CME-06-	3/8	9.52		1.00	20.64		13.50	14.29
CME-08-	1/2	12.70	0.049	1.24	27.00	6.35	20.70	20.65
CME-12-	3/4	19.05	0.065	1.65	27.00		20.70	20.65

Reducing Micro Elbow 90°

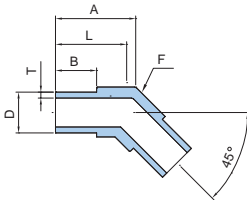
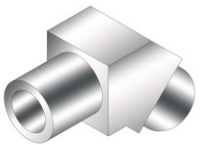
CMRE



Part No.	Tube O.D. D		Tube W.T. T		Tube O.D. D1		Tube W.T. T1		Dimension (mm)			Body Cube
	inch	mm	inch	mm	inch	mm	inch	mm	A	B	L	
CMRE-0402-	1/4	6.35	0.039	1.00	1/8	3.17	0.028	0.71	14.29	6.35	10.32	7.94
CMRE-0604-	3/8	9.52		1.00	1/4	6.35	1.00	17.46	11.91		11.11	
CMRE-0804-	1/2	12.70	0.049	1.24	1/4	6.35	0.039	1.00	20.64	6.35	13.50	14.29
CMRE-0806-	1/2	12.70	0.049	1.24	3/8	9.52						

Micro Elbow 45°

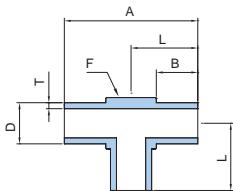
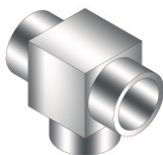
CMVE



Part No.	Tube O.D. D		Tube W.T. T		Dimension (mm)			Body Cube
	inch	mm	inch	mm	A	B	L	
CMVE-04-*A-	1/4	6.35	0.035	0.89	11.96	6.35	10.32	7.94
CMVE-04-	1/4	6.35	0.039	1.00				
CMVE-06-	3/8	9.52		1.00	14.21	6.35	11.91	11.11
CMVE-08-	1/2	12.70	0.049	1.24	16.46			

Micro Tee

CMT

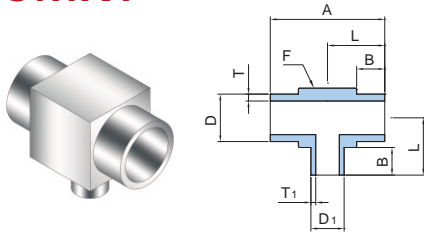


Part No.	Tube O.D. D		Tube W.T. T		Dimension (mm)			Body Cube
	inch	mm	inch	mm	A	B	L	
CMT-02-	1/8	3.17	0.028	0.71	20.64	6.35	10.32	7.94
CMT-04-*A	1/4	6.35	0.035	0.89				
CMT-04-	1/4	6.35	0.039	1.00	23.81	6.35	11.91	11.11
CMT-06-	3/8	9.52		1.00	26.99			
CMT-08-	1/2	12.70	0.049	1.24	33.35	6.35	13.50	14.29
CMT-12-	3/4	19.05	0.065	1.65	33.35			

Dimensions are for reference only and are subject to change without prior notice.

Reducing Micro Tee

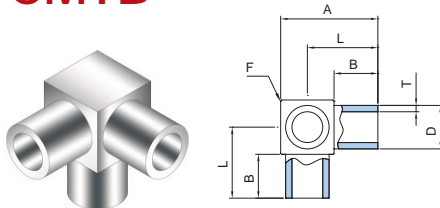
CMRT



Part No.	Tube O.D. D		Tube W.T. T		Tube O.D. D ₁		Tube W.T. T ₁		Dimension (mm)				Body Cube
	inch	mm	inch	mm	inch	mm	inch	mm	A	B	L	F	
CMRT-0402-	1/4	6.35	0.039	1.00	1/8	3.17	0.028	0.71	20.64	6.35	10.32	7.94	
CMRT-0604-	3/8	9.52		1.00	1/4	6.35		1.00	23.81		11.91	11.11	
CMRT-0804-	1/2	12.70	0.049	1.24	1/4	6.35	0.039	1.00	26.99		13.50	14.29	
CMRT-0806-	1/2	12.70	0.049	1.24	3/8	9.52		1.00					

Micro Tribow

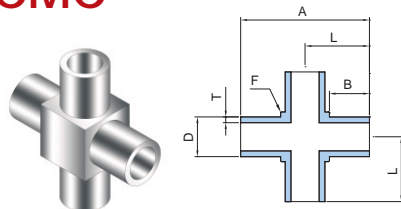
CMTB



Part No.	Tube O.D. D		Tube W.T. T		Dimension (mm)			Body Cube
	inch	mm	inch	mm	B	L	F	
CMTB-04-*A-	1/4	6.35	0.035	0.89	6.35	10.32	7.94	
CMTB-04-	1/4	6.35	0.039	1.00				
CMTB-06-	3/8	9.52		1.00				11.91
CMTB-08-	1/2	12.70	0.049	1.24				13.50

Micro Cross

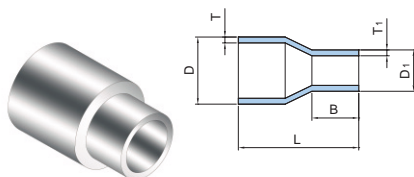
CMC



Part No.	Tube O.D. D		Tube W.T. T		Dimension (mm)				Body Cube	
	inch	mm	inch	mm	A	B	L	F		
CMC-04-*A-	1/4	6.35	0.035	0.89	20.64	6.35	10.32	7.94		
CMC-04-	1/4	6.35	0.039	1.00						
CMC-06-	3/8	9.52		1.00					23.81	11.91
CMC-08-	1/2	12.70	0.049	1.24					26.99	13.50

Reducing Micro Union

CMRU



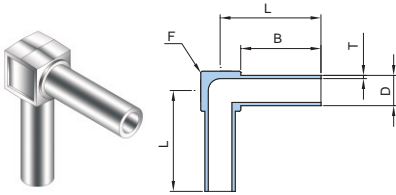
Part No.	Tube O.D. D		Tube W.T. T		Tube O.D. D ₁		Tube W.T. T ₁		Dimension (mm)	
	inch	mm	inch	mm	inch	mm	inch	mm	B	L
CMRU-0402-	1/4	6.35	0.039	1.00	1/8	3.17	0.028	0.71	6.35	19.05
CMRU-0604-	3/8	9.52		1.00	1/4	6.35	1.00			
CMRU-0804-	1/2	12.70	0.049	1.24	1/4	6.35	1.00			
CMRU-0806-	1/2	12.70	0.049	1.24	3/8	9.52	0.039	1.00		
CMRU-1204-	3/4	19.05	0.065	1.65	1/4	6.35	1.00			
CMRU-1206-	3/4	19.05	0.065	1.65	3/8	9.52	1.00			
CMRU-1208-	3/4	19.05	0.065	1.65	1/2	12.70	0.049	1.24		

Dimensions are for reference only and are subject to change without prior notice.

Weld Fittings

Long Elbow 90°

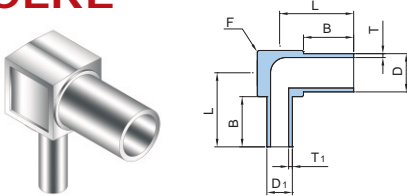
CLE



Part No.	Tube O.D. D		Tube W.T. T		Dimension (mm)		Body Cube	
	inch	mm	inch	mm	B	L	F	
CLE-04-	1/4	6.35	0.039	1.00	19.00	20.00	25.00	9.00
CLE-06-	3/8	9.53		1.00				11.00
CLE-08-	1/2	12.7	0.049	1.24		27.00	15.00	
CLE-12-	3/4	19.05	0.065	1.65		31.50	22.00	
CLE-16-	1	25.4	0.065	1.65		34.00	30.00	

Reducing Long Elbow 90°

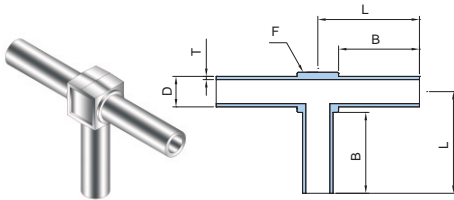
CLRE



Part No.	Tube O.D. D		Tube W.T. T		Tube O.D. D1		Tube W.T. T1		Dimension (mm)		Body Cube
	inch	mm	inch	mm	inch	mm	inch	mm	B	L	F
CLRE-0604-	3/8	9.53	0.039	1.00	1/4	6.35	0.039	1.00	19.00	25.00	11.00
CLRE-0804-	1/2	12.70	0.049	1.24	1/4	6.35		1.00			
CLRE-0806-	1/2	12.70	0.049	1.24	3/8	9.53		1.00		31.50	22.00
CLRE-1204-	3/4	19.05	0.065	1.65	1/4	6.35		1.00			
CLRE-1206-	3/4	19.05	0.065	1.65	3/8	9.53		1.00			
CLRE-1208-	3/4	19.05	0.065	1.65	1/2	12.70	0.049	1.24			

Long Tee

CLT

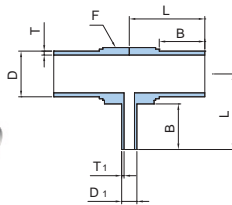
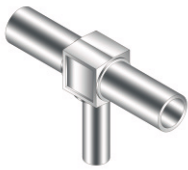


Part No.	Tube O.D. D		Tube W.T. T		Dimension (mm)		Body Cube	
	inch	mm	inch	mm	B	L	F	
CLT-04-	1/4	6.35	0.039	1.00	19.00	20.00	25.00	9.00
CLT-06-	3/8	9.53		1.00				11.00
CLT-08-	1/2	12.7	0.049	1.24		27.00	15.00	
CLT-12-	3/4	19.05	0.065	1.65		31.50	22.00	
CLT-16-	1	25.4	0.065	1.65		34.00	30.00	

Dimensions are for reference only and are subject to change without prior notice.

Reducing Long Tee

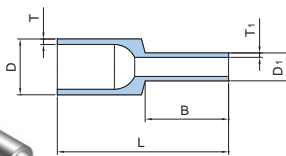
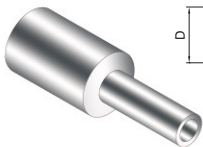
CLRT



Part No.	Tube O.D. D		Tube W.T. T		Tube O.D. D ₁		Tube W.T. T ₁		Dimension (mm)		Body Cube	
	inch	mm	inch	mm	inch	mm	inch	mm	B	L		F
CLRT-0604-	3/8	9.53	0.039	1.00	1/4	6.35		1.00	19.00		25.00	11.00
CLRT-0804-	1/2	12.70	0.049	1.24	1/4	6.35		1.00			27.00	15.00
CLRT-0806-	1/2	12.70	0.049	1.24	3/8	9.53	0.039	1.00				
CLRT-1204-	3/4	19.05	0.065	1.65	1/4	6.35		1.00				
CLRT-1206-	3/4	19.05	0.065	1.65	3/8	9.53		1.00			31.50	22.00
CLRT-1208-	3/4	19.05	0.065	1.65	1/2	12.70	0.049	1.24				

Reducing Long Union

CLRU



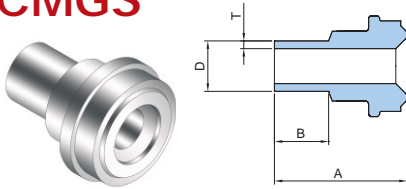
Part No.	Tube O.D. D		Tube W.T. T		Tube O.D. D ₁		Tube W.T. T ₁		Dimension (mm)	
	inch	mm	inch	mm	inch	mm	inch	mm	B	L
CLRU-0604-	3/8	9.53	0.039	1.00	1/4	6.35		1.00	19.00	39.00
CLRU-0804-	1/2	12.70	0.049	1.24	1/4	6.35		1.00		
CLRU-0806-	1/2	12.70	0.049	1.24	3/8	9.53	0.039	1.00		
CLRU-1204-	3/4	19.05	0.065	1.65	1/4	6.35		1.00		42.90
CLRU-1206-	3/4	19.05	0.065	1.65	3/8	9.53		1.00		
CLRU-1208-	3/4	19.05	0.065	1.65	1/2	12.70	0.049	1.24		44.5
CLRU-1604-	1	25.40	0.065	1.65	1/4	6.35	0.039	1.00		
CLRU-1606-	1	25.40	0.065	1.65	3/8	9.53		1.00		
CLRU-1608-	1	25.40	0.065	1.65	1/2	12.70	0.049	1.24		
CLRU-1612-	1	25.40	0.065	1.65	3/4	19.05	0.065	1.65		

Dimensions are for reference only and are subject to change without prior notice.

Glands

Micro Gland S

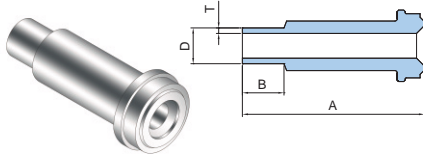
CMGS



Part No.	UCR Size	Tube O.D. D		Tube W.T. T		Dimension (mm)	
	inch	inch	mm	inch	mm	A	B
CMGS-04-	1/4	1/4	6.35	0.039	1.00	15.30	6.35
CMGS-0804-	1/2	1/4	6.35		1.00		
CMGS-0806-	1/2	3/8	9.53		1.00	15.80	
CMGS-08-	1/2	1/2	12.70	0.049	1.24		

Micro Gland L

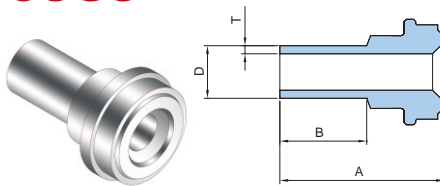
CMGL



Part No.	UCR Size	Tube O.D. D		Tube W.T. T		Dimension (mm)	
	inch	inch	mm	inch	mm	A	B
CMGL-04-	1/4	1/4	6.35	0.039	1.00	30.50	6.35
CMGL-0804-	1/2	1/4	6.35		1.00		
CMGL-0806-	1/2	3/8	9.53		1.00	32.80	
CMGL-08-	1/2	1/2	12.70	0.049	1.24		

Short Gland S

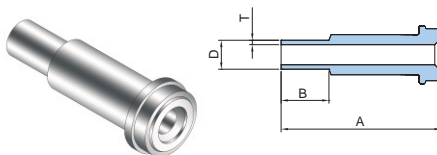
CSGS



Part No.	UCR Size	Tube O.D. D		Tube W.T. T		Dimension (mm)	
	inch	inch	mm	inch	mm	A	B
CSGS-04-	1/4	1/4	6.35	0.039	1.00	18.95	10.00
CSGS-0804-	1/2	1/4	6.35		1.00		
CSGS-0806-	1/2	3/8	9.53		1.00	19.45	
CSGS-08-	1/2	1/2	12.70	0.049	1.24		

Short Gland L

CSGL

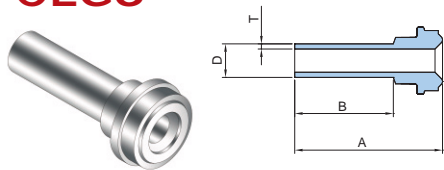


Part No.	UCR Size	Tube O.D. D		Tube W.T. T		Dimension (mm)	
	inch	inch	mm	inch	mm	A	B
CSGL-0402-	1/4	1/8	3.17	0.028	0.71	28.00	10.00
CSGL-04-	1/4	1/4	6.35	0.039	1.00	34.15	
CSGL-0804-	1/2	1/4	6.35		1.00		
CSGL-0806-	1/2	3/8	9.53		1.00	28.50	
CSGL-08-	1/2	1/2	12.70	0.049	1.24		

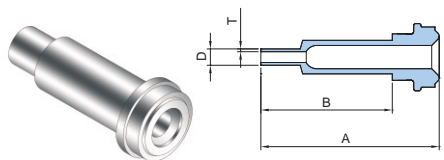
Dimensions are for reference only and are subject to change without prior notice.

Long Gland S

CLGS



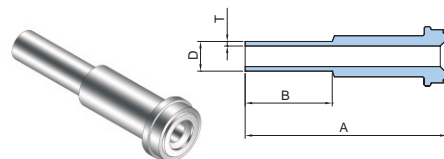
Part No.	UCR Size	Tube O.D. D		Tube W.T. T		Dimension (mm)	
	inch	inch	mm	inch	mm	A	B
CLGS-0402-	1/4	1/8	3.17	0.028	0.71	28.00	19.05
CLGS-04-	1/4	1/4	6.35	0.039	1.00		
CLGS-0804-	1/2	1/4	6.35		1.00		
CLGS-0806-	1/2	3/8	9.53		1.00		
CLGS-08-	1/2	1/2	12.70	0.049	1.24	28.50	
CLGS-12-	3/4	3/4	19.05	0.065	1.65	32.00	20.60
CLGS-16-	1	1	25.40	0.065	1.65	38.60	19.05



Part No.	UCR Size	Tube O.D. D		Tube W.T. T		Dimension (mm)	
	inch	inch	mm	inch	mm	A	B
CLGS-0402-33.5-	1/4	1/8	3.17	0.028	0.71	33.50	20.00

Long Gland L

CLGL



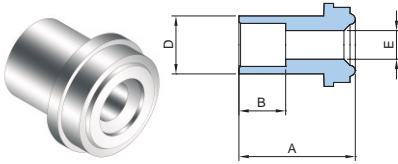
Part No.	UCR Size	Tube O.D. D		Tube W.T. T		Dimension (mm)	
	inch	inch	mm	inch	mm	A	B
CLGL-04-	1/4	1/4	6.35	0.039	1.00	43.20	19.05
CLGL-0804-	1/2	1/4	6.35		1.00		
CLGL-0806-	1/2	3/8	9.53		1.00		
CLGL-08-	1/2	1/2	12.70	0.049	1.24	45.50	
CLGL-12-	3/4	3/4	19.05	0.065	1.65	52.00	20.60
CLGL-16-	1	1	25.40	0.065	1.65	58.90	19.05

Dimensions are for reference only and are subject to change without prior notice.

Metal Face Seal (UCR) Fittings

Socket Weld
Short Gland

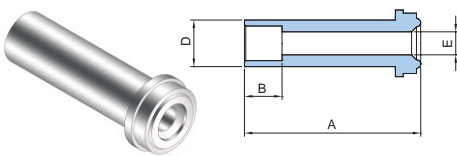
CSGWS



Part No.	UCR Size	Tube O.D. D		Tube W.T. T		Dimension (mm)		
	inch	inch	mm	inch	mm	A	B	E
CSGWS-04T-	1/4	1/4	6.35	0.039	1.00	12.70	7.10	4.35

Socket Weld
Long Gland

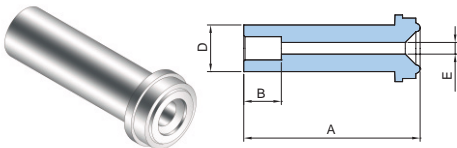
CLGWS



Part No.	UCR Size	Tube O.D. D		Tube W.T. T		Dimension (mm)		
	inch	inch	mm	inch	mm	A	B	E
CLGWS-04-	1/4	1/4	6.35	0.039	1.00	33.30	7.10	4.35
CLGWS-0806-	1/2	3/8	9.53		1.00	38.10	7.90	7.53
CLGWS-08-	1/2	1/2	12.70	0.049	1.24		9.60	10.22
CLGWS-12-	3/4	3/4	19.05	0.065	1.65	50.80	11.20	15.75
CLGWS-16-	1	1	25.40	0.065	1.65	56.40	15.70	22.10

Reducing Socket Weld
Long Gland

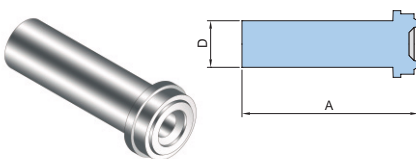
CLGRWS



Part No.	UCR Size	Tube O.D. D		Tube W.T. T		Dimension (mm)		
	inch	inch	mm	inch	mm	A	B	E
CLGRWS-0402-	1/4	1/8	3.17	0.028	0.71	33.30	2.50	2.30
CLGRWS-0804-	1/2	1/4	6.35	0.039	1.00	38.10	7.10	4.35

Blind Gland

CBG



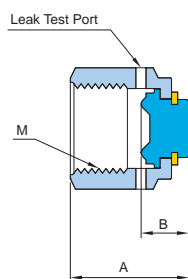
Part No.	UCR Size	Tube O.D. D		Dimension (mm)
	inch	inch	mm	A
CBG-04-	1/4	1/4	6.35	33.30
CBG-08-	1/2	1/2	12.70	38.10
CBG-12-	3/4	3/4	19.05	50.80
CBG-16-	1	1	25.40	50.40

Dimensions are for reference only and are subject to change without prior notice.

Caps, Plugs, Nuts & Gaskets

UCR Cap

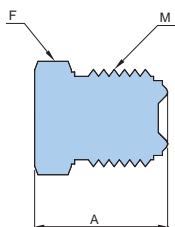
CCP



Part No.	UCR Size	Dimension (mm)			M
	inch	A	B	F	
CCP-04-	1/4	22.90	11.30	19.05	9/16-18UNF
CCP-08-	1/2	25.60	12.20	26.98	7/8-14UNF
CCP-12-	3/4	32.80	13.70	38.10	1 1/4-18UNF
CCP-16-	1	39.40	16.00	46.04	1 1/2-20UNF

UCR Plug

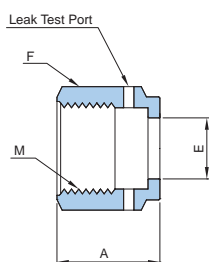
CPG



Part No.	UCR Size	Dimension (mm)		M
	inch	A	F	
CPG-04-	1/4	23.20	17.46	9/16-18UNF
CPG-08-	1/2	27.30	23.81	7/8-14UNF
CPG-12-	3/4	36.30	34.92	1 1/4-18UNF
CPG-16-	1	38.60	47.68	1 1/2-20UNF

UCR Female Nut

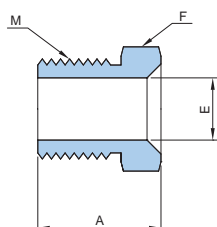
CFN



Part No.	UCR Size	Dimension (mm)			M
	inch	A	E	F	
CFN-04-	1/4	20.50	9.00	19.05	9/16-18UNF
CFN-08-	1/2	22.50	15.30	26.98	7/8-14UNF
CFN-12-	3/4	28.40	22.60	38.10	1 1/4-18UNF
CFN-16-	1	34.00	30.50	46.04	1 1/2-20UNF

UCR Male Nut

CMN



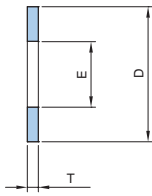
Part No.	UCR Size	Dimension (mm)			M
	inch	A	E	F	
CMN-04-	1/4	18.00	9.10	15.88	9/16-18UNF
CMN-08-	1/2	20.00	15.00	23.81	7/8-14UNF
CMN-12-	3/4	25.40	22.60	34.92	1 1/4-18UNF
CMN-16-	1	30.20	30.50	41.27	1 1/2-20UNF

Dimensions are for reference only and are subject to change without prior notice.

Metal Face Seal (UCR) Fittings

UCR Gasket

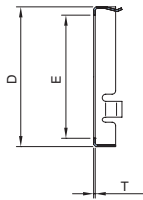
CGT



Part No.	UCR Size	Dimension (mm)		
	inch	E	D	T
CGT-04-	1/4	5.60	11.80	0.70
CGT-08-	1/2	11.00	19.30	
CGT-12-	3/4	17.00	28.10	
CGT-16-	1	22.60	34.80	

UCR Gasket Retained

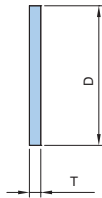
CGTR



Part No.	UCR Size	Dimension (mm)		
	inch	E	D	T
CGTR-04-	1/4	5.60	11.80	0.25
CGTR-08-	1/2	11.00	19.30	
CGTR-12-	3/4	17.00	28.10	0.30
CGTR-16-	1	22.60	34.80	

UCR Gasket Blind

CGTB



Part No.	UCR Size	Dimension (mm)	
	inch	D	T
CGTB-04-	1/4	11.80	0.70
CGTB-08-	1/2	19.30	
CGTB-12-	3/4	28.10	
CGTB-16-	1	34.80	

Retainer Color Coding

Easy identification of gasket materials before assembly or throughout the leak test port of Female Nut after assembly



316LSS



Nickel

Materials of Gaskets

Every gaskets are available with Nickel and 316LSS. To order, add the material designator to the end of part number.

Examples :

CGT-04-NI Gasket, 1/4", Nickel

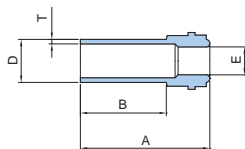
CGTR-08-SS Retained Gasket, 1/2", 316SS

Dimensions are for reference only and are subject to change without prior notice.

High Flow Components

HR Gland

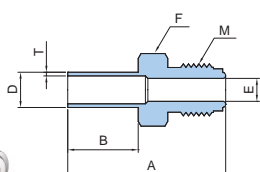
CHG



Part No.	UCR Size	Tube O.D. D		Tube W.T. T		Dimension (mm)		
	inch	inch	mm	inch	mm	A	B	E
CHG-0406-	1/4	3/8	9.53	0.039	1.00	28.70	19.05	6.20
CHG-0406L-	1/4	3/8	9.53	0.039	1.00	33.30	19.05	6.20

HR Adapter

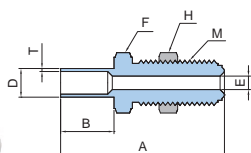
CHA



Part No.	UCR Size	Tube O.D. D		Tube W.T. T		Dimension (mm)				M
	inch	inch	mm	inch	mm	A	B	E	F	
CHA-0406-	1/4	3/8	9.53	0.039	1.00	42.70	19.05	6.35	15.87	9/16-18UNF

HR Bulkhead Adapter

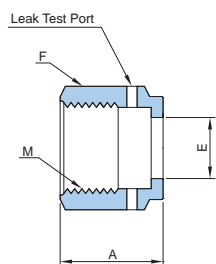
CHBA



Part No.	UCR Size	Tube O.D. D		Tube W.T. T		Dimension (mm)					M	Panel Hole Size
	inch	inch	mm	inch	mm	A	B	E	F	H		
CHBA-0406-	1/4	3/8	9.53	0.039	1.00	59.80	19.05	6.30	19.05	19.05	9/16-18UNF	15.00

HR Female Nut

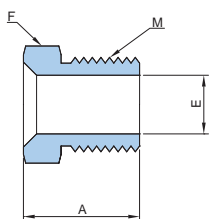
CHFN



Part No.	UCR Size	Dimension (mm)			M
	inch	A	E	F	
CHFN-04-	1/4	17.30	11.50	19.05	9/16-18UNF

HR Male Nut

CHMN



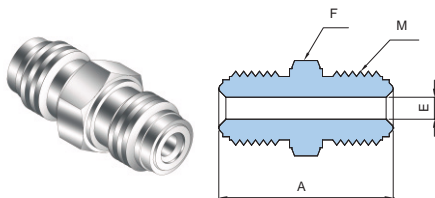
Part No.	UCR Size	Dimension (mm)			M
	inch	A	E	F	
CHMN-04-	1/4	18.00	9.90	15.88	9/16-18UNF

Dimensions are for reference only and are subject to change without prior notice.

UCR to UCR

Double Male Union

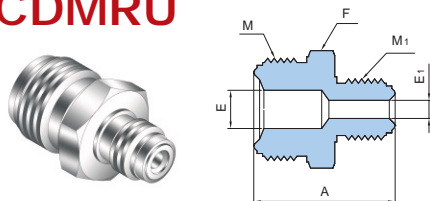
CDMU



Part No.	UCR Size	Dimension (mm)			M
	inch	A	E	F	
CDMU-04-	1/4	39.40	4.57	15.87	9/16-18UNF
CDMU-08-	1/2	47.20	10.22	23.80	7/8-14UNF
CDMU-12-	3/4	62.00	15.70	33.33	1 1/4-18UNF
CDMU-16-	1	65.80	22.10	41.27	1 1/2-20UNF

Reducing Double Male Union

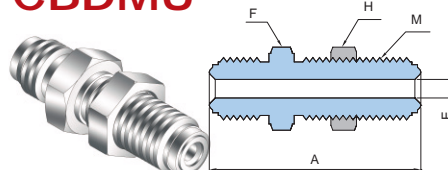
CDMRU



Part No.	UCR Size	UCR Size	Dimension (mm)				M	M1
	inch	inch	A	E	E1	F		
CDMRU-0804-	1/2	1/4	43.40	10.22	4.57	23.80	7/8-14UNF	9/16-18UNF

Bulkhead Double Male Union

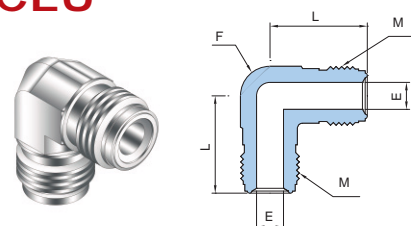
CBDMU



Part No.	UCR Size	Dimension (mm)					M	Panel Hole Size
	inch	A	B	E	F	H		
CBDMU-04-	1/4	56.60	33.70	4.57	19.05	19.05	9/16-18UNF	15.00
CBDMU-08-	1/2	65.30	37.60	10.22	26.98	26.98	7/8-14UNF	23.00

Union Elbow

CEU

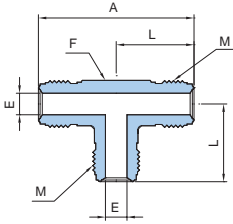


Part No.	UCR Size	Dimension (mm)			M
	inch	L	E	F	
CEU-04-	1/4	27.20	4.35	12.70	9/16-18UNF
CEU-08-	1/2	36.80	10.22	20.63	7/8-14UNF
CEU-12-	3/4	48.80	15.75	31.75	1 1/4-18UNF
CEU-16-	1	50.80	22.10	42.86	1 1/2-20UNF

Dimensions are for reference only and are subject to change without prior notice.

Union Tee

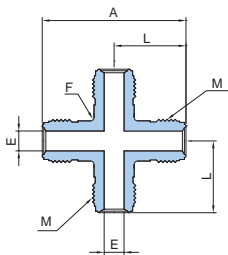
CUT



Part No.	UCR Size	Dimension (mm)				M
	inch	A	E	L	F	
CUT-04-	1/4	54.40	4.35	27.20	12.70	9/16-18UNF
CUT-08-	1/2	73.87	10.22	36.80	20.63	7/8-14UNF
CUT-12-	3/4	97.50	15.75	48.80	31.75	1 1/4-18UNF
CUT-16-	1	102.00	22.10	50.80	42.86	1 1/2-20UNF

Union Cross

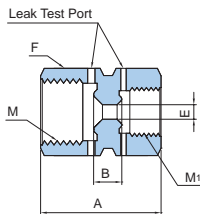
CUC



Part No.	UCR Size	Dimension (mm)				M
	inch	A	E	L	F	
CUC-04-	1/4	54.40	4.35	27.20	12.70	9/16-18UNF
CUC-08-	1/2	73.87	10.22	36.80	20.63	7/8-14UNF
CUC-12-	3/4	97.50	15.75	48.80	31.75	1 1/4-18UNF
CUC-16-	1	102.00	22.10	50.80	42.86	1 1/2-20UNF

Reducing Double Female Union

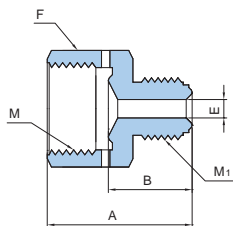
CDFRU



Part No.	UCR Size	UCR Size	Dimension (mm)				M	M ₁
	inch	inch	A	B	E	F		
CDFRU-0804-	1/2	1/4	34.60	6.00	4.35	26.98	7/8-14UNF	9/16-18UNF

Reducing Adapter

CRA

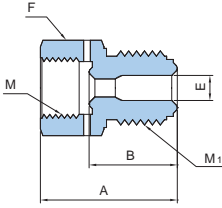


Part No.	UCR Size	UCR Size	Dimension (mm)				M (Female)	M ₁ (Male)
	inch	inch	A	B	E	F		
CRA-0804-	1/2	1/4	35.80	21.60	4.35	26.98	7/8-14UNF	9/16-18UNF

Dimensions are for reference only and are subject to change without prior notice.

Reducing Bushing

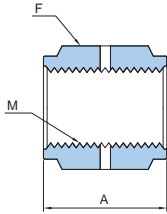
CRB



Part No.	UCR Size	UCR Size	Dimension (mm)				M (Female)	M ₁ (Male)
	inch	inch	A	B	E	F		
CRB-0804-	1/2	1/4	35.80	23.10	4.35	23.81	9/16-18UNF	7/8-14UNF

Coupling

CC



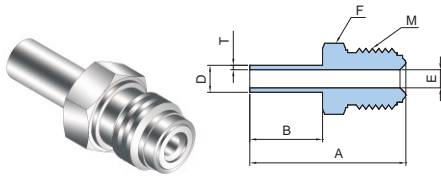
Part No.	UCR Size	Dimension (mm)		M (Female)
	inch	A	H	
CC-04-	1/4	30.20	19.05	9/16-18UNF
CC-08-	1/2	33.30	26.98	7/8-14UNF
CC-12-	3/4	42.70	38.10	1 1/4-18UNF
CC-16-	1	51.80	44.45	1 1/2-20UNF

Dimensions are for reference only and are subject to change without prior notice.

UCR to TBW (Tube Butt Weld)

TBW Adapter

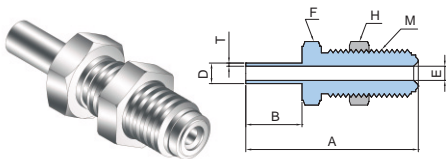
CAWB



Part No.	UCR Size	Tube O.D. D		Tube W.T. T		Dimension (mm)				M (Female)
	inch	inch	mm	inch	mm	A	B	E	H	
CAWB-04-	1/4	1/4	6.35	0.039	1.00	42.65		4.35	15.88	9/16-18UNF
CAWB-0804-	1/2	3/8	9.53		1.00	46.70	19.05	10.22	23.81	7/8-14UNF
CAWB-08-	1/2	1/2	12.70	0.049	1.24	46.70		10.22	23.81	1 1/4-18UNF

Bulkhead TBW Adapter

CBAWB

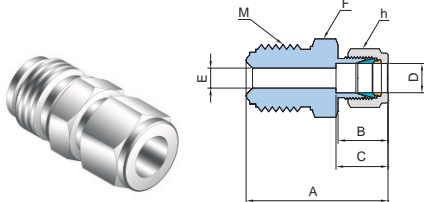


Part No.	UCR Size	Tube O.D. D		Tube W.T. T		Dimension (mm)				M (Female)	Panel Hole Size
	inch	inch	mm	inch	mm	A	B	F	H		
CBAWB-04-	1/2	1/4	6.35	0.039	1.00	59.85		19.05	19.05	9/16-18UNF	15.00
CBAWB-0804-	1/2	3/8	9.53		1.00	65.25	19.05	26.98	26.98	7/8-14UNF	23.00
CBAWB-08-	1/2	1/2	12.70	0.049	1.24	71.30		38.10	38.10	1 1/4-18UNF	32.00

UCR to Uni-Lok

Uni-Lok Connector

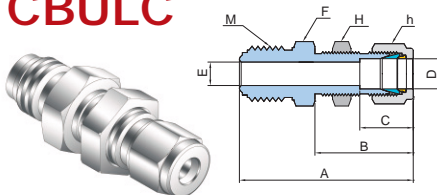
CULC



Part No.	UCR Size	Tube O.D. D		Dimension (mm)						M
	inch	inch	mm	A	B	C	E	F	h	
CULC-0402-	1/4	1/8	3.17	38.90	15.20	12.70	2.30	15.87	11.11	9/16-18UNF
CULC-04-	1/4	1/4	6.35	41.10	17.80	15.20	4.60	15.87	14.28	9/16-18UNF
CULC-0806-	1/2	3/8	9.53	46.70	19.30	16.80	7.10	23.81	17.46	7/8-14UNF
CULC-08-	1/2	1/2	12.70	49.50	21.80	22.90	10.20	23.81	22.22	7/8-14UNF

Bulkhead Uni-Lok Connector

CBULC



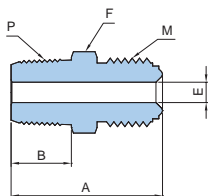
Part No.	UCR Size	Tube O.D. D		Dimension (mm)						M	Panel Hole Size	
	inch	inch	mm	A	B	C	E	F	H			h
CBULC-04	1/4	1/4	6.35	57.20	33.50	15.20	4.60	15.87	15.87	14.28	9/16-18UNF	15.00
CBULC-0806-	1/2	3/8	9.53	64.50	36.80	16.80	7.10	23.81	23.81	17.46	7/8-14UNF	23.00
CBULC-08-	1/2	1/2	12.70	69.60	41.90	22.90	10.20	23.81	23.81	22.22	7/8-14UNF	32.00

Dimensions are for reference only and are subject to change without prior notice.

UCR to Thread

Male Connector

CUMC

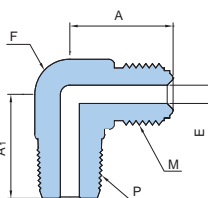


Part No.	UCR Size	Thread Size P-NPT	Dimension (mm)				M
	inch	inch	A	B	E	F	
CUMC-0402N-	1/4	1/8	33.30	9.60	4.35	15.90	9/16-18UNF
CUMC-0404N-	1/4	1/4	37.84	14.22	4.35	15.90	9/16-18UNF
CUMC-0804N-	1/2	1/4	41.87	14.22	10.22	23.80	7/8-14UNF
CUMC-0806N-	1/2	3/8	41.87	14.22	7.53	23.80	7/8-14UNF
CUMC-0808N-	1/2	1/2	46.74	19.05	10.22	23.80	7/8-14UNF
CUMC-1212N-	3/4	3/4	55.63	19.05	15.75	33.30	1 1/4-18UNF
CUMC-1616N-	1	1	62.74	23.88	22.10	42.40	1 1/2-20UNF

ISO7/1 Tapered Threads (PT) are available for all fractional sizes of CUMC. Add "R" as a suffix instead of "N".

Male Elbow

CUME

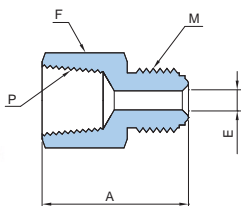


Part No.	UCR Size	Thread Size P-NPT	Dimension (mm)				M
	inch	inch	A	A1	E	F	
CUME-0404N-	1/4	1/4	27.18	27.18	4.35	15.95	9/16-18UNF
CUME-0806N-	1/2	3/8	36.83	32.00	10.22	23.80	9/16-18UNF
CUME-0808N-	1/2	1/2	36.83	36.83	10.22	23.80	7/8-14UNF
CUME-1212N-	3/4	3/4	48.80	43.50	15.75	33.30	7/8-14UNF

ISO7/1 Tapered Threads (PT) are available for all fractional sizes of CUME. Add "R" as a suffix instead of "N".

Female Connector

CUFC



Part No.	UCR Size	Thread Size P-NPT	Dimension (mm)			M
	inch	inch	A	B	F	
CUFC-0402N-	1/4	1/8	35.80	4.35	15.90	9/16-18UNF
CUFC-0404N-	1/4	1/4	39.10	4.35	19.05	9/16-18UNF
CUFC-0806N-	1/2	3/8	44.70	7.53	23.81	7/8-14UNF
CUFC-0808N-	1/2	1/2	50.50	10.22	26.98	7/8-14UNF
CUFC-1212N-	3/4	3/4	59.90	15.75	33.33	1 1/4-18UNF
CUFC-1616N-	1	1	63.80	22.10	41.27	1 1/2-20UNF

ISO7/1 Tapered Threads (PT) are available for all fractional sizes of CUFC. Add "R" as a suffix instead of "N".

Uni-Lok Line up

Instrumentation

Fittings



- Tube Fittings
- PTFE Fittings
- Hose & Push-On Connectors
- Precision Pipe Fittings
- Fusible Connectors
- Dielectric Fittings

Valves



- VB1 series
 - VB2 series
 - VB3 series
 - VB6B series
 - VB6F series
 - VB6T series
 - VP series
 - VN5 series
 - VN6 series
 - VU6 series
 - VMT series
 - VM series
 - VG series
 - VL series
 - VD series
 - VC series
 - VR series
 - VE series
 - VF series
 - VPR series
 - VBR series
- Precision & Clean Ball Valves
Swing-Out Ball Valves
Instrumentation Ball Valves
High Pressure Bar Stock Ball Valves
High Pressure Forged Ball Valves
Trunnion Ball Valves
Plug Valves
- Integral Bonnet Forged Needle Valves
High Pressure Bar Stock Needle Valves
Union Bonnet Valves
Metering Valves
- Instrumentation Manifolds Valves
Gauge & Gauge Root Valves
Bleed Valves
- Double Block and Bleed Valves
- General & High Pressure Relief Valves
Low & High Pressure Relief Valves
Industrial Excess Flow Valves
- T & In-Line Filters
Pressure Reducing Valves
Back Pressure Regulators

Others

- Seamless & Welded Tubing
- Condensate Pots

UHP(Ultra High Purity)

Fittings



- Weld & Metal Face Seal Fittings
- Pipe & Tube Fittings
- Flanges
- Cylinder Connectors

Valves



- VCD series
- VCB series
- VCC series
- Diaphragm Valves
- Bellows Valves
- Welded Check Valves

*CONNECTS THE WORLD SINCE 1984
WITH THE SAME ATTITUDE
OF THE TIME OF BEGINNING*



Uni-Lok[®] Uni-Lok corporation

본사 및 제1공장

인천광역시 남동구 고잔동 725-13번지
남동공단 152블럭 12롯데 ☎ 405-822
전화 : 032-822-6600
팩스 : 032-822-6604

제2공장

인천광역시 남동구 고잔동 684-7번지
남동공단 114블럭 8롯데 ☎ 405-818
전화 : 032-433-6601
팩스 : 032-441-7600

Headquarters & 1st Factory

152 Block-12 Lot, Namdong Indus-Park, 725-13,
Gojan-Dong, Namdong-Gu, Incheon, Korea
Tel : +82-32-821-6673
Fax : +82-32-822-6604

2nd Factory

114 Block-8 Lot, Namdong Indus-Park, 684-7,
Gojan-Dong, Namdong-Gu, Incheon, Korea
Tel : +82-32-433-6601
Fax : +82-32-441-7600