

## Reflex level gauge LG40-CS

### Application and function

The reflex level gauge is a direct level gauge, which can be used for steam boilers and vessels. In the sight opening, the water level is indicated dark and the steam light.

The product corresponds to the PED directive 97/23/EEC art. 3 par. 3 SEP. (Sound Engineering Practice).

Applied rules as per AD2000 DIN12952 and DIN12953.

### Technical basic equipment

- Body material: carbon steel
- With drain valve and ventilation plug
- Shutoff valves type A120
- Drain valve
- Sight length see table

### Available (optional) versions

- Body material stainless steel
- Other drain valves on request

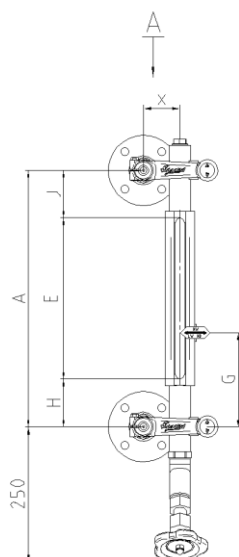
### Technical data

All. pressure	PS	[bar]	32	
All. temperature	TS	[° C]	239	
Shutoff valve	Type	A120	Data sheet	D-09-D-16354-0
Drain valve	Type		Data sheet	

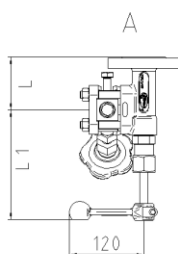
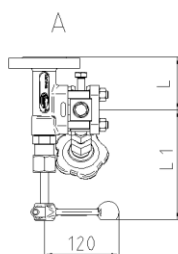
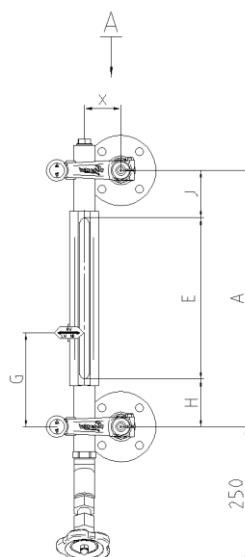


**Dimensions**

Left sided model



Right sided model



Size		2	3	4	5	6	7	8	9	10
Sight length	E [mm]	120	145	170	200	230	260	300	320	350
Dimension	H/J <sub>min</sub> [mm]	30								
	H/J <sub>max</sub> [mm]	On request								
	X [mm]	59								

Allowable pressure PS [bar]	shutoff valve	Flange	Welding end	X	L	L1
32	A110			59 mm	85 mm	175 mm

