

# QINGYANG GC200-BN PIPE GROOVING MACHINE



## 1. Function

QINGYANG GC200-BN pipe grooving machine is mainly used for rolling annular groove at the end of the steel pipe to install ring fittings for pipe connection. It is an ideal tool for pipe grooving work in construction and installation sectors.

## 2. Features

- Designed to roll steel pipe
- Hydraulic drive
- Good performance-price ratio
- Reliable structure and stable performance
- Upper Pinch roller is adjustable relative to lower knurl roller

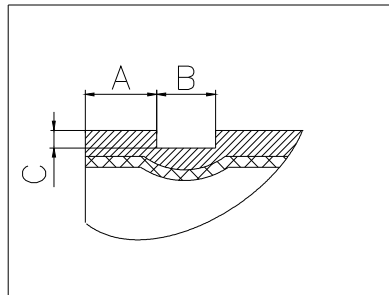
## 3. Technical Specifications

<b>MODEL</b>		GC200-BN
<b>Capacity</b>	<b>Pipe wall thickness</b>	1~6mm

<b>Diameter</b>	50~200 (2"~8", steel pipe)
<b>Type of feed</b>	Hydraulic Pressure
<b>Standard of groove</b>	Following US groove standard
<b>Spindle speed</b>	29rpm
<b>Max. working pressure</b>	40KN
<b>Motor</b>	YC7142T(S) 220V 750W 2800r/min
<b>Net weight</b>	59kg
<b>Machine size</b>	637×316×600mm
<b>Packing size</b>	705×385×670mm

#### 4. Dimensions of Rolled Grooves

**DIMENSIONS OF ROLLED GROOVES (mm)**



PIPE DIA.	A	B	C
50	15.88	8.74	1.60
65	15.88	8.74	1.98
80	15.88	8.74	1.98
100	15.88	8.74	2.11
125	15.88	8.74	2.11
150	15.88	8.74	2.16
200	19.05	11.91	2.34

#### 5. Attached Tools and Accessories

DESCRIPTION	SPECIFICATIONS	QUANTITY
Pipe stand	JLM4.114.1059	1

<b>Hydraulic oil</b>	200ml	One bottle
<b>Pinch roller</b>	61033	1
<b>Screw Driver</b>	75	2
<b>Hexagonal Spanner</b>	4, 5, 6, 8	One for each
<b>Double-end Spanner</b>	10×12, 16×18	One for each

Note:

1. The above information is subject to change without notice.
2. In case GC200-BN is used to groove steel pipes (without plastic lining), it is necessary to change the pinch roller and knurl roller.

**JINJIANG ELECTRIC MACHINERY IMPORT & EXPORT COMPANY**

**2015.10**