

# ECP30ZX

## CONCRETE PUMPS / BOOM PUMPS

G.V.W(Gross Vehicle Weight) : 21.3ton



\* Weight and dimension figures here are subject to change on various chassis option and additional axle application etc.

### BOOM

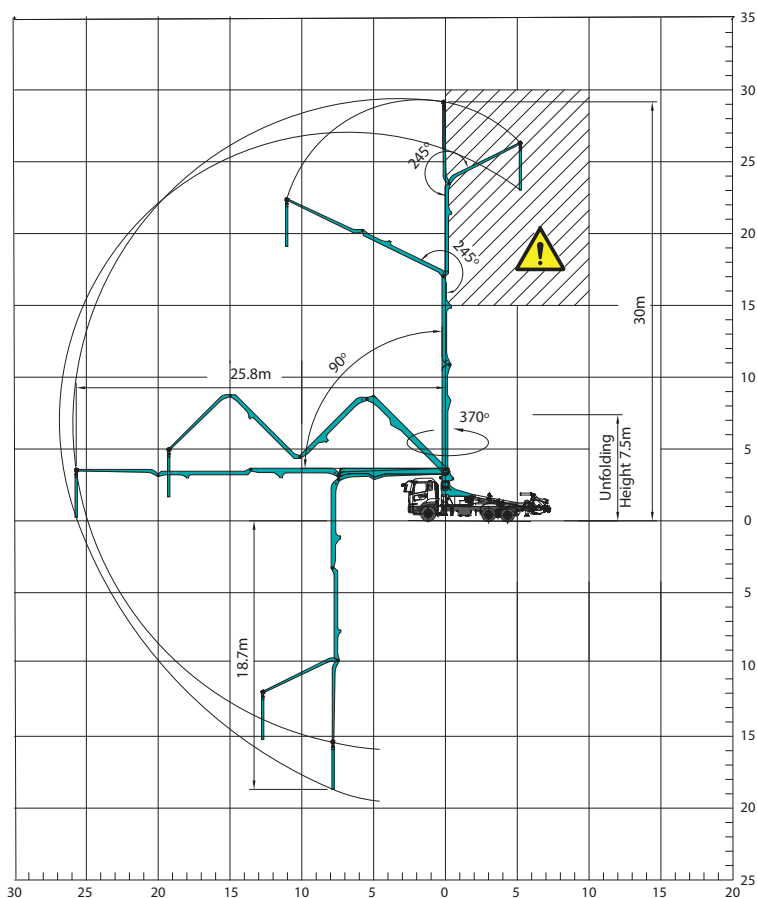
Folding type	4-section Z-folding
Max. vertical reach	29.2m
Max. horizontal reach	25.8m
Max. depth reach	18.7m
Unfolding height	7.5m
Slewing angle	370deg.
End hose length	3m
Delivery pipe dia.	125mm

### PUMP

Pump cell	1609	1611
Control system	Closed Free Flow Hydraulic	
Main pump	A4VG125	A4VG180
Concrete cylinder (mm)	200x1,600	230x1,600
Strokes No.(per min.)*	25	27
Concrete output(m <sup>3</sup> /h)*	90	110
Concrete pressure(bar)*	70	85
Transfer tube type	S-Tube, S2018 (Dia. 200-180mm)	
Volume of hopper (liter)	600	600

\*Rod side. Ouput & pressure are theoretical data.

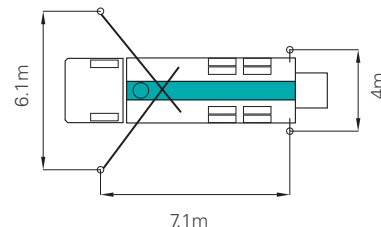
## WORKING RANGE



Don't use in caution area

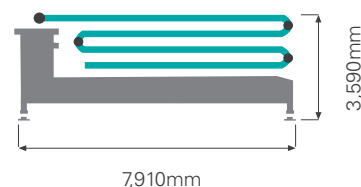
UNIT : m

## OUTRIGGER SPREAD



Front outrigger type X(Diagonal) Extension  
Rear outrigger type Telescopic

## UPPER BODY DIMENSION



## FEATURES & SUPPLY SCOPE

- |   |  |
|---|--|
| Inductive proximity switch with indicator | Flushing water pump(30bar)               |
| Single lip concrete piston                | Water tank (400L)                        |
| Hard-chromed concrete cylinders           | Spray nozzle with 15m hose               |
| Outrigger pilot check valves              | Auto lubrication system for hopper       |
| Greasing port on boom link and pedestal   | Tungsten carbide for wear ring and plate |
| Working light on pedestal                 | Flap elbow(180-150mm) with cleaning port |
| Aluminum platform(non-skid)               | Reducing pipe(150-125mm)                 |
| Bubble gauge on both side                 | Agitator motors on both side hopper      |
|   | Working light on hopper                  |

## OPTIONS

- Twin wall pipe line
- Safety(oss) system
- Working light on boom
- Auto-lubrication for boom and pedestal
- Hopper cover
- Central manual lubrication for hopper
- Safety device for hopper
- Vibrator on hopper grid
- Stainless hand rail
- Auxiliary fuel tank on one side rear outrigger
- Customized color

\*EVERDIGM reserves the right to make changes to specifications and supply scope. Specifications and supply scope are subject to change without prior notice.

# EVERDIGM



### HEAD OFFICE & FACTORY

49, Buyeong-gil, Jincheon-eup, Jincheon-gun, Chungcheongbuk-do, Korea (27844)  
TEL +82-1588-0758 FAX +82-43-530-3318

### SALES & MARKETING OFFICE

Room#1203, WoolimLion's Valley2, 2 Gasan digital 1-ro, Geumcheon-gu, Seoul, Korea (08591)  
TEL +82-2-801-0700 FAX +82-2-801-0799 E-mail angelica@everdigm.com