

# InBio160 PoE Bundle

## IP-Based Advanced Access Control Panel



- 1 InBio160 Control Panel
- 1 Metal Case
- 1 PoE Splitter(25W)
- 1 Network Cable
- 1 Metal Plate
- 1 FR107 Diode for Lock
- 2 Keys for Metal Case
- 1 User Manual

InBio160 carries out the matching of fingerprints on the panels. The FR Series of readers transmit fingerprint templates to InBio160 via RS-485 for fast and accurate matching with templates stored in a data-base.

In this bundle, the PoE splitter can offer 12V 2A DC for both InBio160 and one 12V DC lock. On the input side, just need connect the splitter to a PoE switch.



### Choice of Readers

Full range of card readers supported. ZK KR-Series readers are stylish and waterproof. InBio supports any wiegand-output reader, including HID Prox, iClass, and XceedID Multi-Technology.



### Communication

InBio controllers installed easily on your network and support both TCP/IP and RS-485 communication. Auto-discovery function make the setting and modification of network parameters direct and easy.



### Lowest Total Cost of Ownership

InBio controller firmware can be upgraded in the field. New controller features can be loaded without any advanced tools, extending and expanding the value of your investment.



### Capacity

10,000 events and transactions. Controller is backed up in real-time in on-board optional SD card. Data is preserved when power failure. Controller continues to operate if network connection is interrupted.



### Door Control and More

Along with relay contacts for controlling door locks, easily programmable auxiliary relays can be used for additional control and interface to lights, alarms, annunciators, intrusion detection panels, or even extra locking devices or gate controllers.



### Options

InBio controllers come in three sizes to suit project needs and reduce the cost of unused capacity. 1-door, 2-door, and 4-door models can be mixed and matched in an optimized system architecture.



### Advanced Access Control Built-In

Anti-Passback, First-Card Opening, Multi-Card Opening, Duress Password Entry, and Auxiliary Input/Output Linkages are built into controller firmware.



### For Software Developers

Free SDK is available for integrators and OEM's to integrate the InBio controllers with their or existing security or personnel management applications. Upon request, ZK can also customize InBio firmware to meet any custom requirements.

# Specification of InBio160

## Capacity:

User: 30,000  
 Fingerprint: 3,000  
 Event Buffer: 100,000 transactions

## Communication:

RS485, Ethernet

## Power:

Nominal Voltage of InBio160: 12v  
 Standby Current of InBio160: 50mA

## Environment:

Operating Temp: 0°C~ 45 °C  
 Operating Humidity: 20%~ 80%

## Additional Info:

Number of doors controlled: One door  
 Number of readers Supported: 2  
 Aux. Input: 1  
 Aux. Output: 1  
 Types of readers supported: 26-bit Wiegand, others upon request  
 Number of Inputs: 2 (Exit Device and Door Status)  
 Number of Outputs: 2 (One Form C relay for lock and one Form C relay for Aux output)  
 Weight: 3.35kg  
 Dimensions (Bundle Only): 305.2mm x 298.4mm x 89mm  
 Dimensions ( Board Only): 183mm x 106mm

# Specification of POE Splitter

## POE Parameters:

Maximum Power:  
 15.4W (IEEE 802.3af)  
 25.5W (IEEE 802.3at)  
 Input voltage: 36-57V  
 Output voltage: 12V

## Network standards:

IEEE802.3i 10 BASE-T,  
 IEEE802.3i 100 BASE-TX,  
 IEEE802.3x flow control  
 IEEE802.3af/ IEEE802.3at

## Working Temperature:

0°C ~ 45 °C

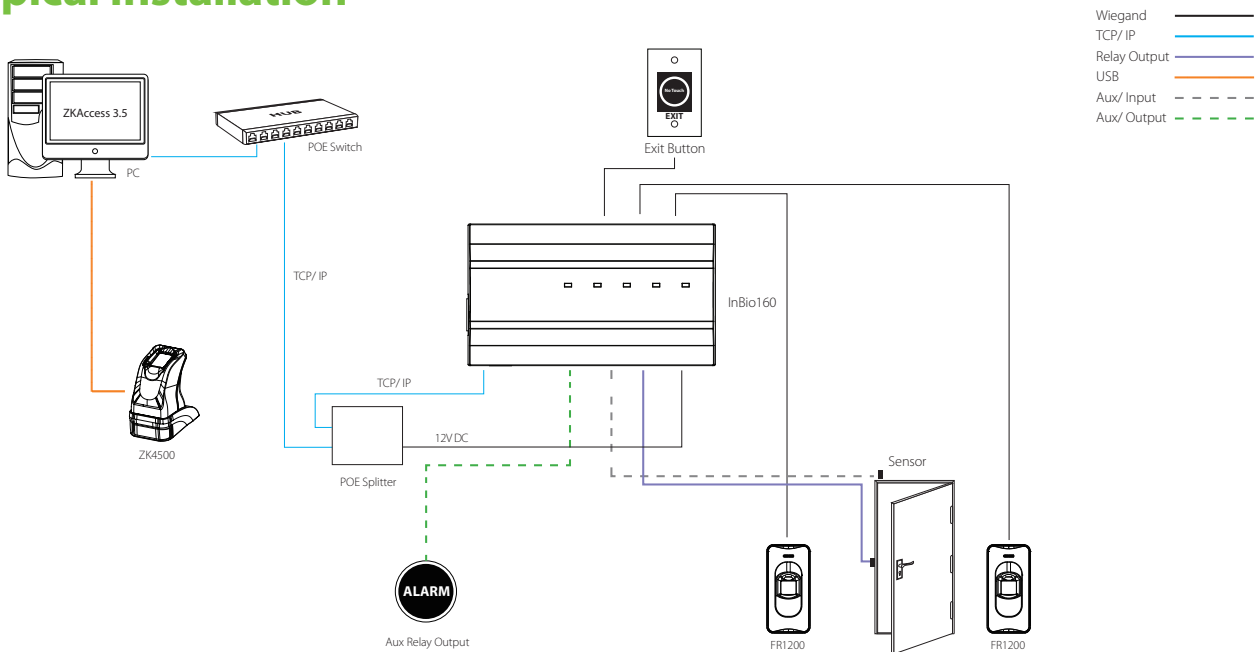
## Interface protection:

Meet the IEC61000-4-2 (ESD) ± 15KV (air), ± 8KV (contact) requires  
 And able to withstand 8/20us 24A (12A) energy.

## Connect Port:

Input: an input RJ45 interface  
 Output: an output RJ45 connector and a DC output interface  
 Data transfer rate: 10/100/1000Mbps  
 The maximum transmission distance: 100 meters

# Typical Installation



ZKTeco Inc.  
 www.zkteco.com  
 E-mail: sales@zkteco.com

© Copyright 2016. ZKTeco Inc. ZKTeco Logo is a registered trademark of ZKTeco or a related company. All other product and company names mentioned are used for identification purposes only and may be the trademarks of their respective owners. All specifications are subject to change without notice. All rights reserved.

